

Manta, shimmering waves.

design Dodo Arslan & Nicolas Terzani
terzani.com

TERZANI
LA LUCE PENSATA



Product Name

Manta
pendant light

Materials

clear crystal

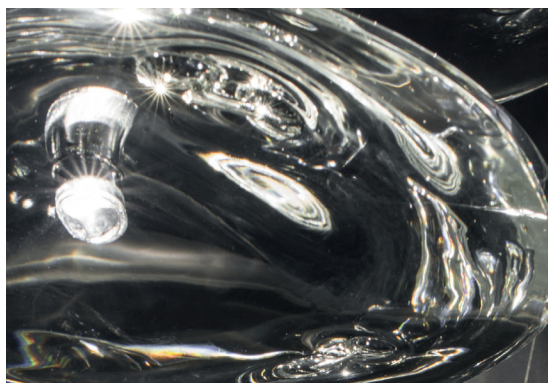
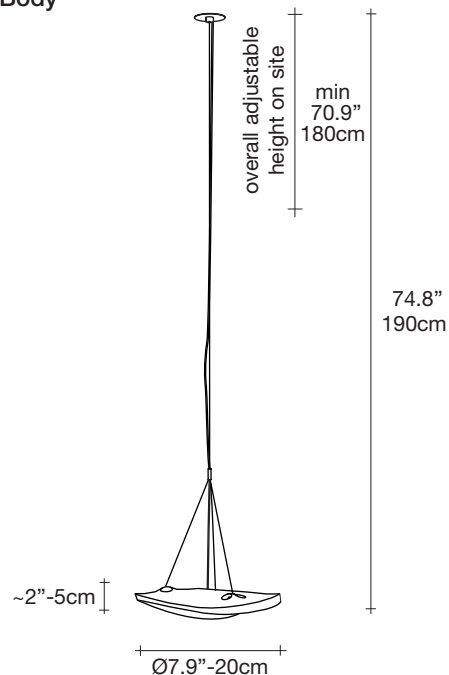
Finishes | Code



white disc | clear
OK011 E8 A9 KK

Body

NO DRIVER INCLUDED



Light source

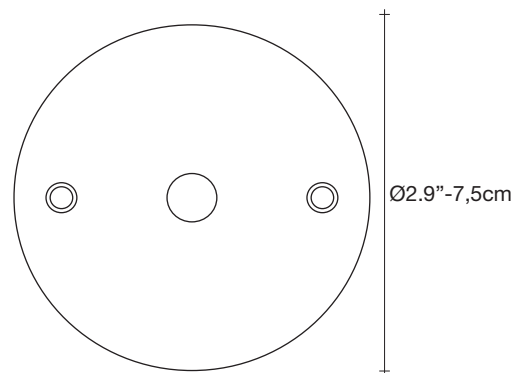
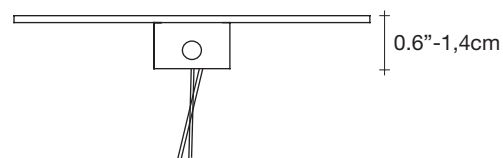
500mA ~ 50/60Hz

- ⦿ Built in Replaceable LED Module
1.5W 135 lm 3000K

dimnable drivers available

- ⦿ not dimmable
- ⦿ 0/1-10V
PUSH
DALI

Disc | white



Manta is the latest design featuring the distinctive lead crystal first unveiled in Nicolas Terzani's best-selling Mizu. Collaborating with designer Dodo Arslan, the two imaginative minds created a light featuring sinuous, undulating lines. The results are soft waves of crystal light reminiscent of being underwater. The innovative Manta is made of crystal, with a dimmable integrated LED lamp focused on maximizing the crystal's reflection. Manta's organic form is available in three sizes (Ø 20cm-7.9", Ø 26cm-10.2", Ø 32cm-12.6") and can be installed in numerous, customizable arrangements. Design Dodo Arslan & Nicolas Terzani.



lbs 4.9

kg 2,2



lbs 6.2

kg 2,8



12.6" x 9.5" x 6.7"

32 x 24 x 17 cm

Manta, shimmering waves.

design Dodo Arslan & Nicolas Terzani
terzani.com

TERZANI
LA LUCE PENSATA



Product Name

Manta
pendant light

Materials

clear crystal

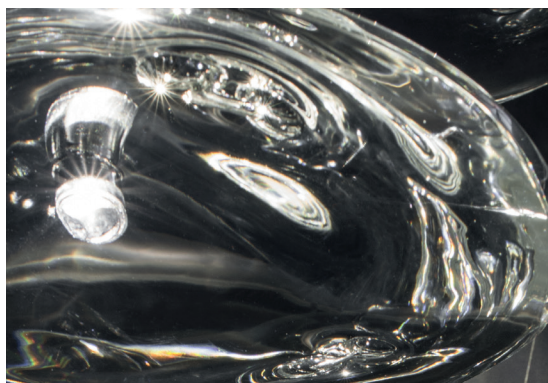
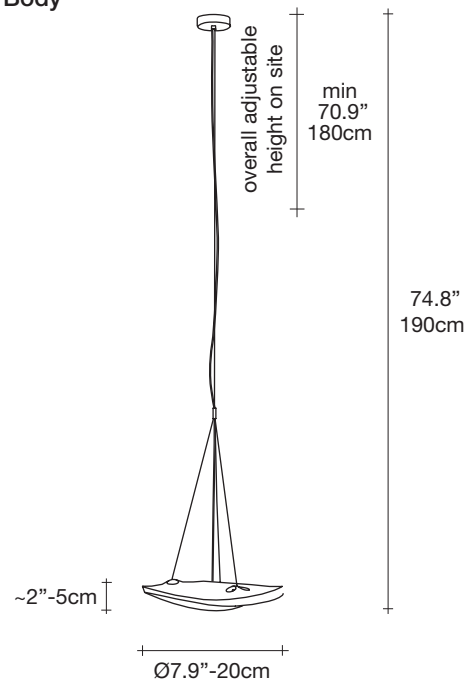


Finishes | Code



clear
OK011 E8 A9

Body



Light source

120V ~ 50/60Hz

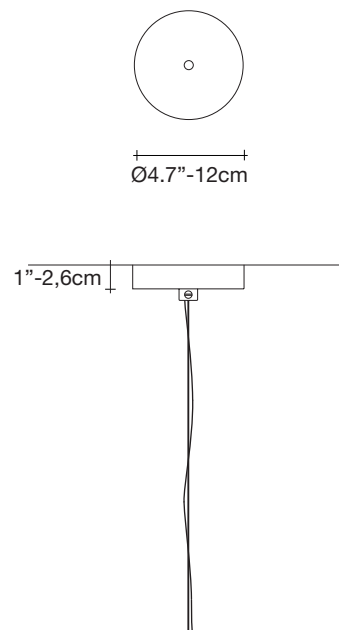


Built in Replaceable LED Module
1.5W 135 lm 3000K



not dimmable

Canopy | white



Manta is the latest design featuring the distinctive lead crystal first unveiled in Nicolas Terzani's best-selling Mizu. Collaborating with designer Dodo Arslan, the two imaginative minds created a light featuring sinuous, undulating lines. The results are soft waves of crystal light reminiscent of being underwater. The innovative Manta is made of crystal, with a dimmable integrated LED lamp focused on maximizing the crystal's reflection. Manta's organic form is available in three sizes (Ø 20cm-7.9", Ø 26cm-10.2", Ø 32cm-12.6") and can be installed in numerous, customizable arrangements. Design Dodo Arslan & Nicolas Terzani.



lbs 4.9

kg 2,2



lbs 6.2

kg 2,8



12.6" x 9.5" x 6.7"

32 x 24 x 17 cm

Manta, shimmering waves.

design Dodo Arslan & Nicolas Terzani
terzani.com

TERZANI
LA LUCE PENSATA



Product Name

Manta
pendant light

Materials

clear crystal

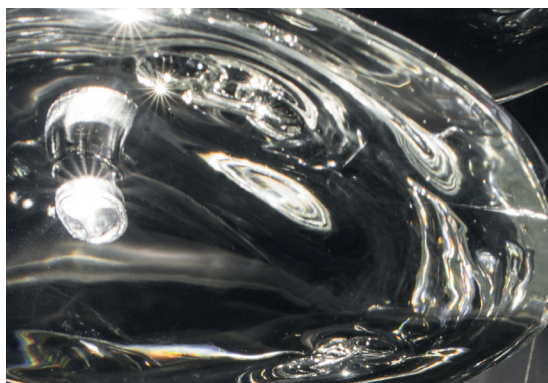
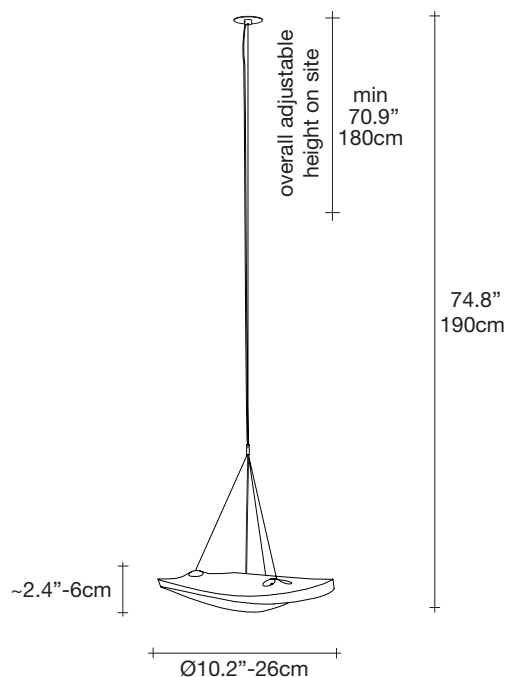
Finishes | Code



white disc | clear
OK012 E8 A9 KK

Body

NO DRIVER INCLUDED



Light source

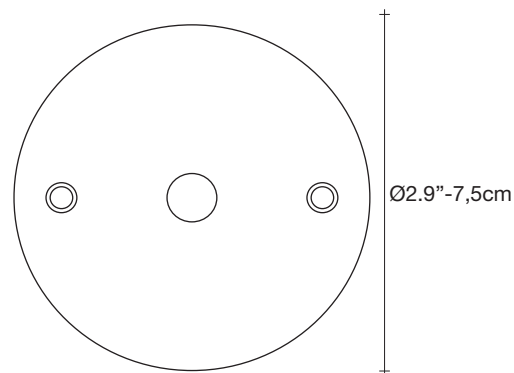
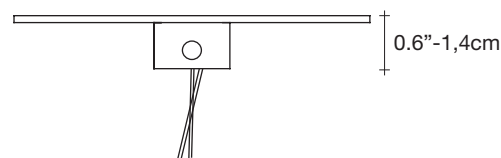
500mA ~ 50/60Hz

- ⊙ Built in Replaceable LED Module
1.5W 135 lm 3000K

dimnable drivers available

- ⊙ not dimmable
- ⊙ 0/1-10V
PUSH
DALI

Disc | white



Manta is the latest design featuring the distinctive lead crystal first unveiled in Nicolas Terzani's best-selling Mizu. Collaborating with designer Dodo Arslan, the two imaginative minds created a light featuring sinuous, undulating lines. The results are soft waves of crystal light reminiscent of being underwater. The innovative Manta is made of crystal, with a dimmable integrated LED lamp focused on maximizing the crystal's reflection. Manta's organic form is available in three sizes (Ø 20cm-7.9", Ø 26cm-10.2", Ø 32cm-12.6") and can be installed in numerous, customizable arrangements. Design Dodo Arslan & Nicolas Terzani.

Manta, shimmering waves.

design Dodo Arslan & Nicolas Terzani
terzani.com

TERZANI
LA LUCE PENSATA



Product Name

Manta
pendant light

Materials

clear crystal

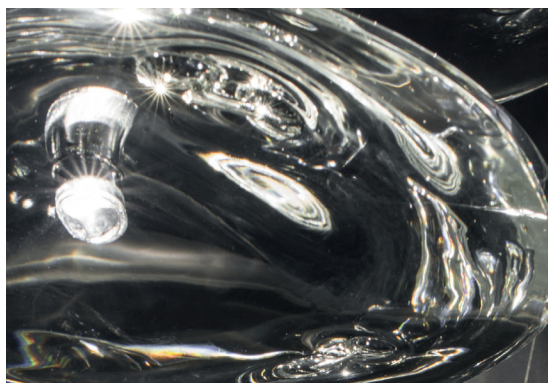
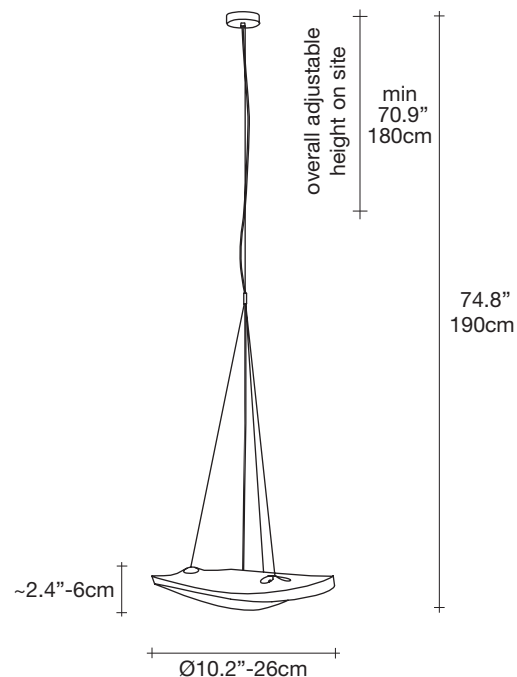


Finishes | Code



clear
OK012 E8 A9

Body



Light source

120V ~ 50/60Hz

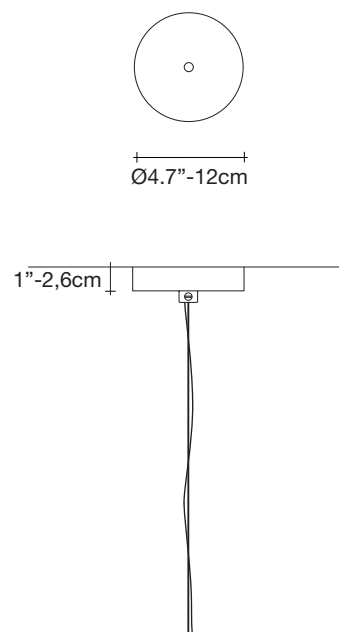


Built in Replaceable LED Module
1.5W 135 lm 3000K



not dimmable

Canopy | white



Manta is the latest design featuring the distinctive lead crystal first unveiled in Nicolas Terzani's best-selling Mizu. Collaborating with designer Dodo Arslan, the two imaginative minds created a light featuring sinuous, undulating lines. The results are soft waves of crystal light reminiscent of being underwater. The innovative Manta is made of crystal, with a dimmable integrated LED lamp focused on maximizing the crystal's reflection. Manta's organic form is available in three sizes (Ø 20cm-7.9", Ø 26cm-10.2", Ø 32cm-12.6") and can be installed in numerous, customizable arrangements. Design Dodo Arslan & Nicolas Terzani.



lbs 9.3

kg 4,2



lbs 11.5

kg 5,2



16.9" x 15" x 6.9"

43 x 38 x 17,5 cm

Manta, shimmering waves.

design Dodo Arslan & Nicolas Terzani
terzani.com

TERZANI
LA LUCE PENSATA



Product Name

Manta
3 light pendant

Materials

clear crystal

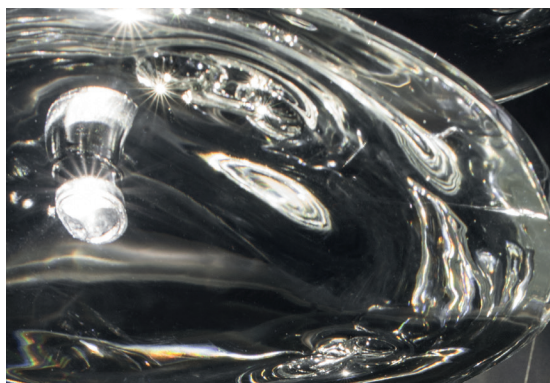
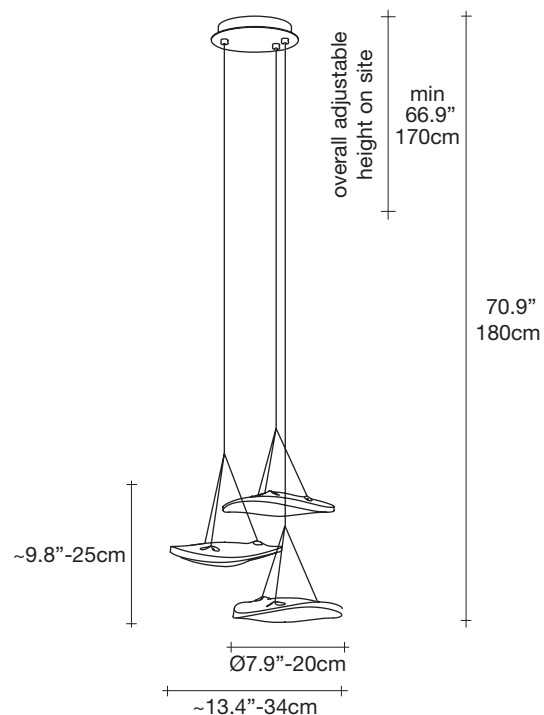


Finishes | Code



clear
OK031 E8 A9

Body



Light source

120V ~ 50/60Hz



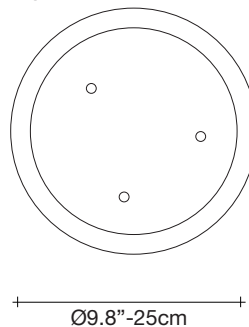
Built in Replaceable LED Module
3 x 1.5W 405 lm 3000K

dimable options

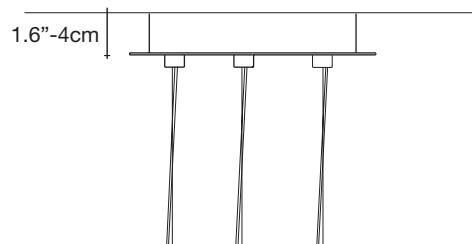


1-10V
PUSH

Canopy | white



Manta is the latest design featuring the distinctive lead crystal first unveiled in Nicolas Terzani's best-selling Mizu. Collaborating with designer Dodo Arslan, the two imaginative minds created a light featuring sinuous, undulating lines. The results are soft waves of crystal light reminiscent of being underwater. The innovative Manta is made of crystal, with a dimmable integrated LED lamp focused on maximizing the crystal's reflection. Manta's organic form is available in three sizes (Ø 20cm-7.9", Ø 26cm-10.2", Ø 32cm-12.6") and can be installed in numerous, customizable arrangements. Design Dodo Arslan & Nicolas Terzani.



lbs 15.4
kg 7



lbs 18.5
kg 8,4



18.7" x 12.4" x 10.8"
47,5 x 31,5 x 27,5 cm