

Manta, shimmering waves.

design Dodo Arslan & Nicolas Terzani
terzani.com

TERZANI
LA LUCE PENSATA



Product Name

Manta
pendant light

Materials

clear crystal

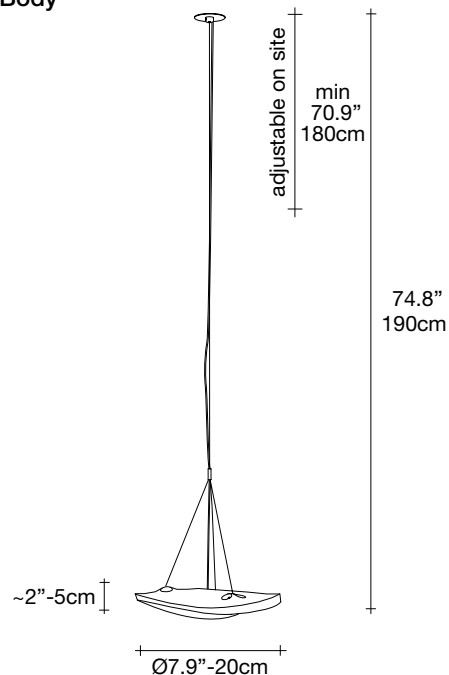
Finishes | Code



white disc/clear
0K011 E8 A9 KK

Body

NO DRIVER INCLUDED



Integrated Led

500mA ~ 50/60Hz

LED integrated
1.5W 105 lm 3000K
or optional 2700K

dimnable drivers available

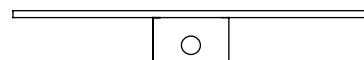
not dimmable

1-10V
PUSH

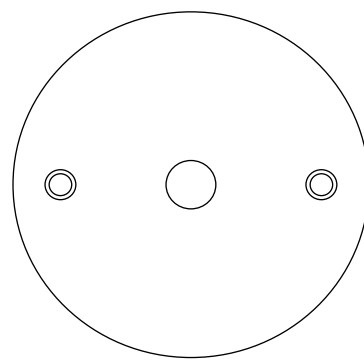
0/1-10V
PUSH
DALI systems

Disc | white

0.6"-1,4cm



Ø2.9"-7,5cm



Manta is the latest design featuring the distinctive lead crystal first unveiled in Nicolas Terzani's best-selling Mizu. Collaborating with designer Dodo Arslan, the two imaginative minds created a light featuring sinuous, undulating lines. The results are soft waves of crystal light reminiscent of being underwater. The innovative Manta is made of crystal, with a dimmable integrated LED lamp focused on maximizing the crystal's reflection. Manta's organic form is available in three sizes (Ø 20cm-7.9", Ø 26cm-10.2", Ø 32cm-12.6") and can be installed in numerous, customizable arrangements. Design Dodo Arslan & Nicolas Terzani.

lbs 4.9
kg 2,2

lbs 6.2
kg 2,8

12.6" x 9.5" x 6.7"
32 x 24 x 17 cm

Manta, shimmering waves.

design Dodo Arslan & Nicolas Terzani
terzani.com

TERZANI
LA LUCE PENSATA



Product Name

Manta
pendant light

Materials

clear crystal

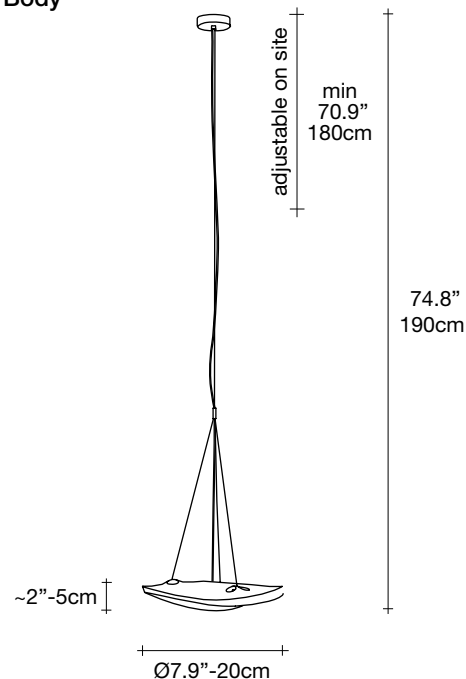


Finishes | Code



clear
OK011 E8 A9

Body



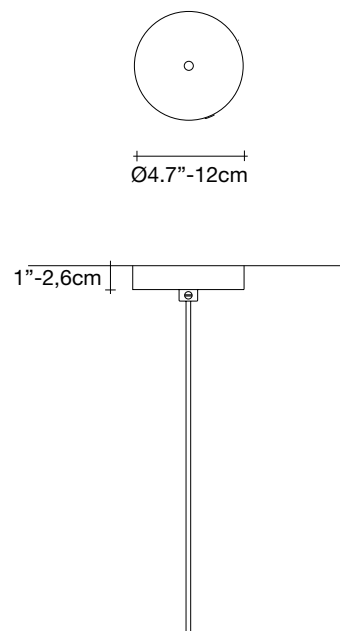
Integrated Led

120V ~ 50/60Hz

LED integrated
1.5W 105 lm 3000K
or optional 2700K

not dimmable

Canopy | white



Manta is the latest design featuring the distinctive lead crystal first unveiled in Nicolas Terzani's best-selling Mizu. Collaborating with designer Dodo Arslan, the two imaginative minds created a light featuring sinuous, undulating lines. The results are soft waves of crystal light reminiscent of being underwater. The innovative Manta is made of crystal, with a dimmable integrated LED lamp focused on maximizing the crystal's reflection. Manta's organic form is available in three sizes (Ø 20cm-7.9", Ø 26cm-10.2", Ø 32cm-12.6") and can be installed in numerous, customizable arrangements. Design Dodo Arslan & Nicolas Terzani.

Manta, shimmering waves.

design Dodo Arslan & Nicolas Terzani
terzani.com

TERZANI
LA LUCE PENSATA



Product Name

Manta
pendant light

Materials

clear crystal

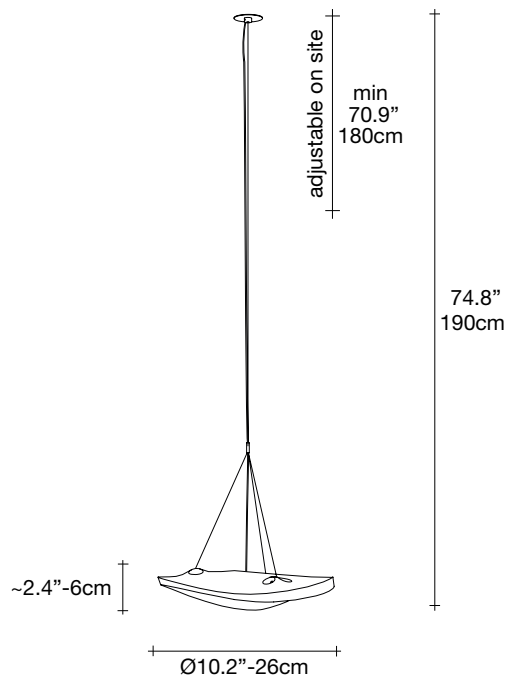
Finishes | Code



white disc/clear
OK012 E8 A9 KK

Body

NO DRIVER INCLUDED



Integrated Led

500mA ~ 50/60Hz

LED integrated
1.5W 105 lm 3000K
or optional 2700K

dimnable drivers available

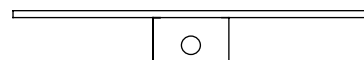
not dimmable

1-10V
PUSH

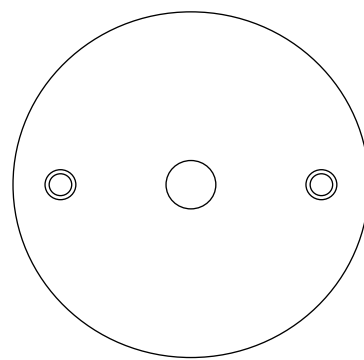
0/1-10V
PUSH
DALI systems

Disc | white

0.6"-1,4cm



Ø2.9"-7,5cm



Manta is the latest design featuring the distinctive lead crystal first unveiled in Nicolas Terzani's best-selling Mizu. Collaborating with designer Dodo Arslan, the two imaginative minds created a light featuring sinuous, undulating lines. The results are soft waves of crystal light reminiscent of being underwater. The innovative Manta is made of crystal, with a dimmable integrated LED lamp focused on maximizing the crystal's reflection. Manta's organic form is available in three sizes (Ø 20cm-7.9", Ø 26cm-10.2", Ø 32cm-12.6") and can be installed in numerous, customizable arrangements. Design Dodo Arslan & Nicolas Terzani.

lbs 9.3
kg 4,2

lbs 11.5
kg 5,2

16.9" x 15" x 6.9"
43 x 38 x 17,5 cm

Manta, shimmering waves.

design Dodo Arslan & Nicolas Terzani
terzani.com

TERZANI
LA LUCE PENSATA



Product Name

Manta
pendant light

Materials

clear crystal

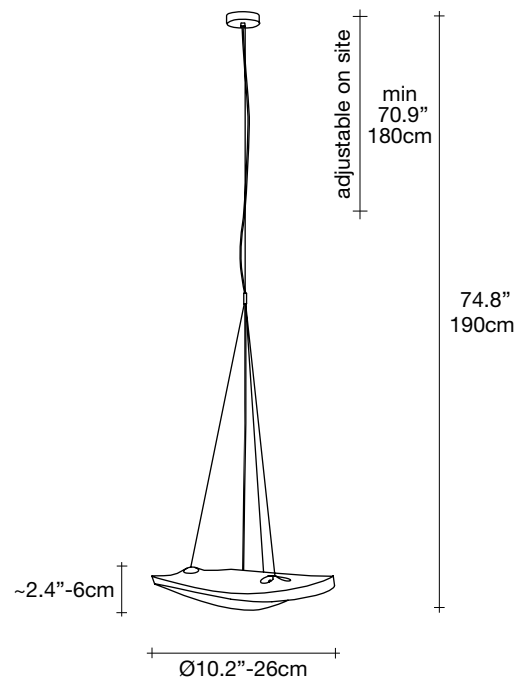


Finishes | Code



clear
OK012 E8 A9

Body



Integrated Led

120V ~ 50/60Hz

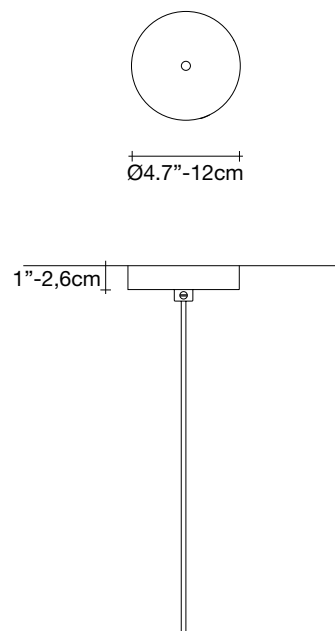


LED integrated
1.5W 105 lm 3000K
or optional 2700K



not dimmable

Canopy | white



Manta is the latest design featuring the distinctive lead crystal first unveiled in Nicolas Terzani's best-selling Mizu. Collaborating with designer Dodo Arslan, the two imaginative minds created a light featuring sinuous, undulating lines. The results are soft waves of crystal light reminiscent of being underwater. The innovative Manta is made of crystal, with a dimmable integrated LED lamp focused on maximizing the crystal's reflection. Manta's organic form is available in three sizes (Ø 20cm-7.9", Ø 26cm-10.2", Ø 32cm-12.6") and can be installed in numerous, customizable arrangements. Design Dodo Arslan & Nicolas Terzani.



lbs 9.3

kg 4,2



lbs 11.5

kg 5,2



16.9" x 15" x 6.9"

43 x 38 x 17,5 cm

Manta, shimmering waves.

design Dodo Arslan & Nicolas Terzani
terzani.com

TERZANI
LA LUCE PENSATA



Product Name

Manta
3 light pendant

Materials

clear crystal

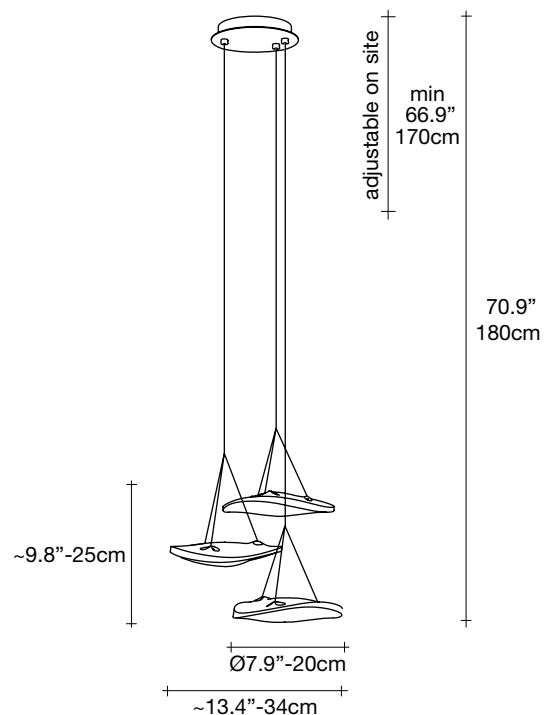


Finishes | Code



clear
OK031 E8 A9

Body



Integrated Led

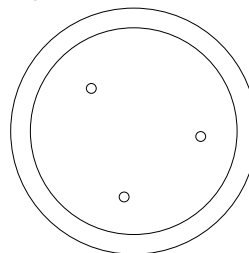
120V ~ 50/60Hz

LED integrated
3 x 1.5W 315 lm 3000K
or optional 2700K

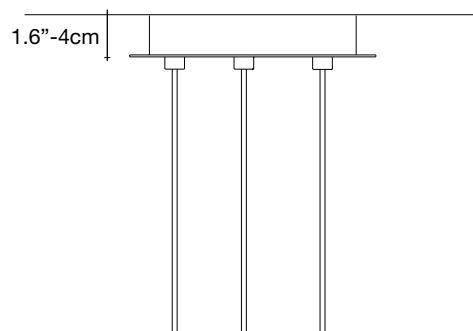
dimmable with

1-10V
PUSH

Canopy | white



Ø9.8" - 25cm



Manta is the latest design featuring the distinctive lead crystal first unveiled in Nicolas Terzani's best-selling Mizu. Collaborating with designer Dodo Arslan, the two imaginative minds created a light featuring sinuous, undulating lines. The results are soft waves of crystal light reminiscent of being underwater. The innovative Manta is made of crystal, with a dimmable integrated LED lamp focused on maximizing the crystal's reflection. Manta's organic form is available in three sizes (Ø 20cm-7.9", Ø 26cm-10.2", Ø 32cm-12.6") and can be installed in numerous, customizable arrangements. Design Dodo Arslan & Nicolas Terzani.



lbs 15.4
kg 7



lbs 18.5
kg 8,4



18.7" x 12.4" x 10.8"
47,5 x 31,5 x 27,5 cm