

# I Lucci Argentati, School of *Light*

design Dodo Arslan  
terzani.com

**TERZANI**  
LA LUCE PENSATA



**Type |**  
Suspension

**Materials |**  
Metal

**Finishes | Code**

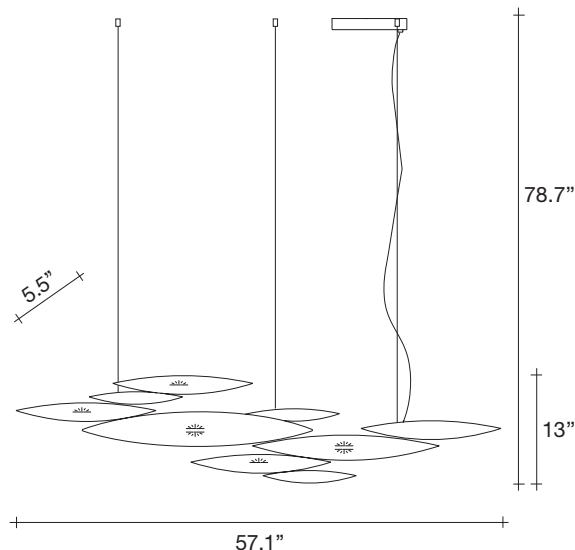


White  
0N82S M2 C8 L



Brushed Nickel  
0N82S H4 C8 L

**Body |**



**Integrated Led |**

120V ~ 50/60Hz



LED integrated  
7 x 4,5W 3710 lm 3000K  
or optional 2700K



Dimmable with 1-10V,  
PWM, 10-100 Ω

**Canopy |**

2.6"



2.2"



9.8"

I Lucci Argentati draws from nature to create a whimsical, yet modern light. Recalling a school of fish darting through freshwater, it creates a mesmerizing luminescence. Sets of sleek lights combine to form a stunning pendant with thin incisions along the bottom creating an understated, tranquil beauty. Thanks to its modular system, I Lucci Argentati is customizable and can be combined in many different configurations: from small to extra large; as a pendant or sconce; and finished either in brushed nickel or white. Design Dodo Arslan.



23.1



17.6



61" x 14" x 7.1"

# I Lucci Argentati, School of *Light*

design Dodo Arslan  
terzani.com

**TERZANI**  
LA LUCE PENSATA



**Type |**  
Suspension

**Materials |**  
Metal

**Finishes | Code**

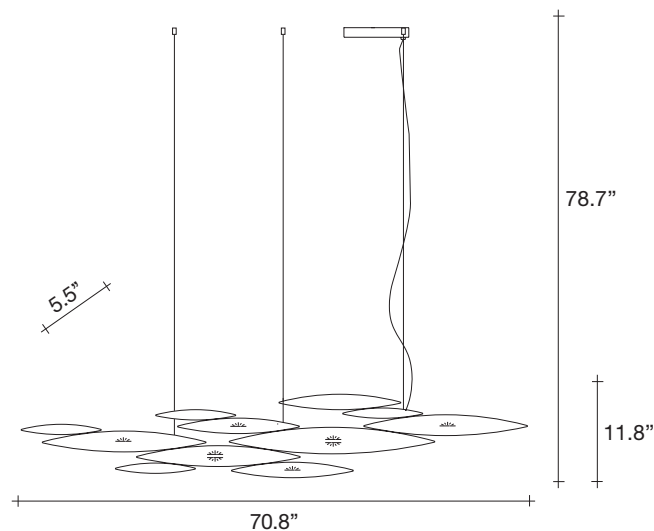


White  
0N83S M2 C8 L



Brushed Nickel  
0N83S H4 C8 L

**Body |**



**Integrated Led |**

120V ~ 50/60Hz

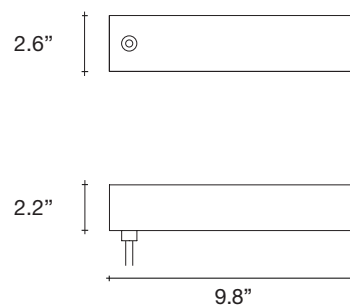


LED integrated  
8 x 4,5W 4240 lm 3000K  
or optional 2700K



Dimmable with 1-10V,  
PWM, 10-100 Ω

**Canopy |**



I Lucci Argentati draws from nature to create a whimsical, yet modern light. Recalling a school of fish darting through freshwater, it creates a mesmerizing luminescence. Sets of sleek lights combine to form a stunning pendant with thin incisions along the bottom creating an understated, tranquil beauty. Thanks to its modular system, I Lucci Argentati is customizable and can be combined in many different configurations: from small to extra large; as a pendant or sconce; and finished either in brushed nickel or white. Design Dodo Arslan.



27.6



16.5



80.7" x 15.7" x 15.7"

# I Lucci Argentati, School of *Light*

design Dodo Arslan  
terzani.com

**TERZANI**  
LA LUCE PENSATA



**Type |**  
Suspension

**Materials |**  
Metal

**Finishes | Code**

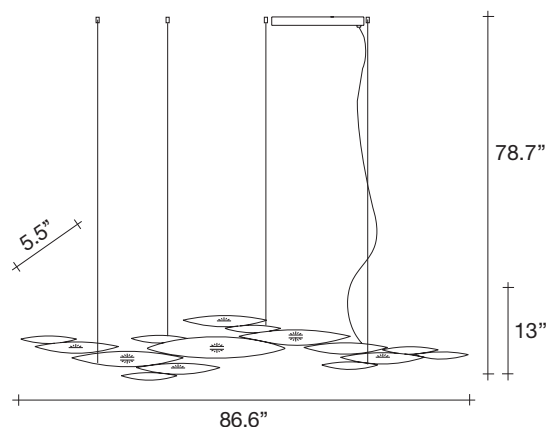


White  
0N81S M2 C8 L



Brushed Nickel  
0N81S H4 C8 L

**Body |**



**Integrated Led |**

120V ~ 50/60Hz

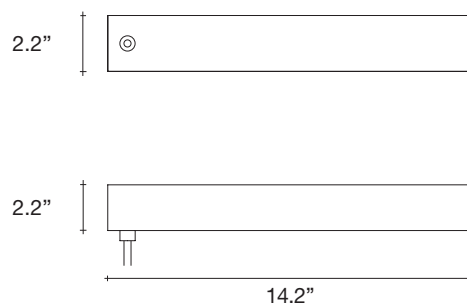


LED integrated  
10 x 4,5W 5300 lm 3000K  
or optional 2700K



Dimmable with 1-10V

**Canopy |**



I Lucci Argentati draws from nature to create a whimsical, yet modern light. Recalling a school of fish darting through freshwater, it creates a mesmerizing luminescence. Sets of sleek lights combine to form a stunning pendant with thin incisions along the bottom creating an understated, tranquil beauty. Thanks to its modular system, I Lucci Argentati is customizable and can be combined in many different configurations: from small to extra large; as a pendant or sconce; and finished either in brushed nickel or white. Design Dodo Arslan.



39.7



19.8



94.9" x 18.1" x 8.7"

# I Lucci Argentati, School of *Light*

design Dodo Arslan  
terzani.com

**TERZANI**  
LA LUCE PENSATA



**Type |**  
Suspension

**Materials |**  
Metal

**Finishes | Code**

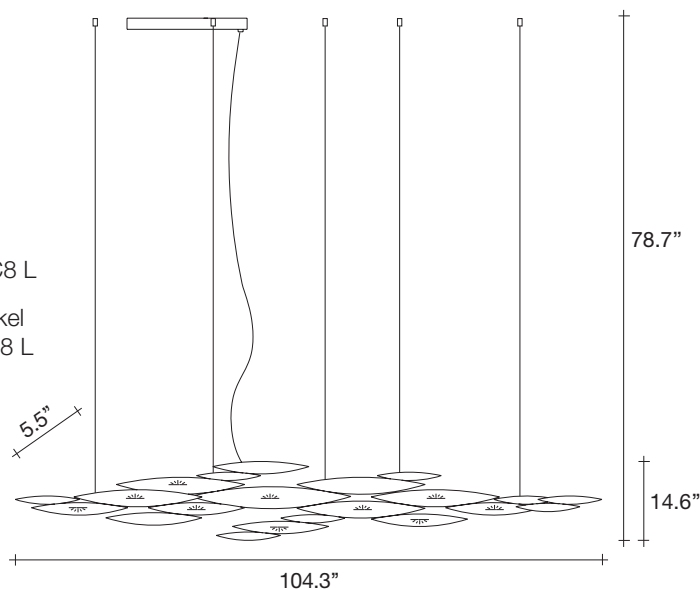


White  
ON80S M2 C8 L



Brushed Nickel  
ON80S H4 C8 L

**Body |**



**Integrated Led |**

120V ~ 50/60Hz



LED integrated  
10 x 4,5W 5300 lm 3000K  
or optional 2700K



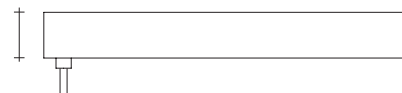
Dimmable with 1-10V

**Canopy |**

2.2"



2.2"



14.2"

I Lucci Argentati draws from nature to create a whimsical, yet modern light. Recalling a school of fish darting through freshwater, it creates a mesmerizing luminescence. Sets of sleek lights combine to form a stunning pendant with thin incisions along the bottom creating an understated, tranquil beauty. Thanks to its modular system, I Lucci Argentati is customizable and can be combined in many different configurations: from small to extra large; as a pendant or sconce; and finished either in brushed nickel or white. Design Dodo Arslan.



48.5



26.5



108.7" x 18.1" x 8.7"

# I Lucci Argentati, School of *Light*

design Dodo Arslan  
terzani.com

**TERZANI**  
LA LUCE PENSATA



**Type |**  
Wall sconce

**Materials |**  
Metal

**Finishes | Code**

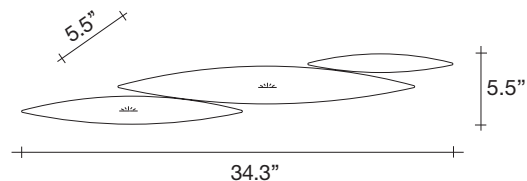


White  
ON85A M2 C8 LB



Brushed Nickel  
ON85A H4 C8 LB

**Body |**



**Integrated Led |**

**120V ~ 50/60Hz**

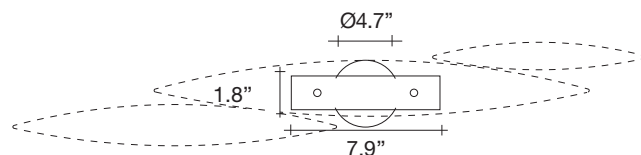


LED integrated  
2 x 4,5W 1060 lm 3000K  
or optional 2700K



Not Dimmable

**Canopy |**



I Lucci Argentati draws from nature to create a whimsical, yet modern light. Recalling a school of fish darting through freshwater, it creates a mesmerizing luminescence. Sets of sleek lights combine to form a stunning pendant with thin incisions along the bottom creating an understated, tranquil beauty. Thanks to its modular system, I Lucci Argentati is customizable and can be combined in many different configurations: from small to extra large; as a pendant or sconce; and finished either in brushed nickel or white. Design Dodo Arslan.



8.8



6.6



42.1" x 9.1" x 10.2"