

Core, Eruption of Light.

design Christian Lava
terzani.com




TERZANI
LA LUCE PENSATA



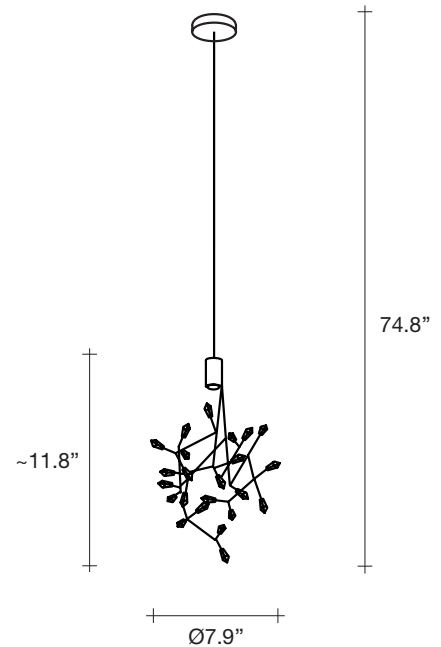
Type |
Suspension

Materials |
Brass

Finishes | Code

-  Nickel
0P22S E7 A9
-  Black Nickel
0P22S E9 A9
-  Gold
0P22S L6 A9

Body |

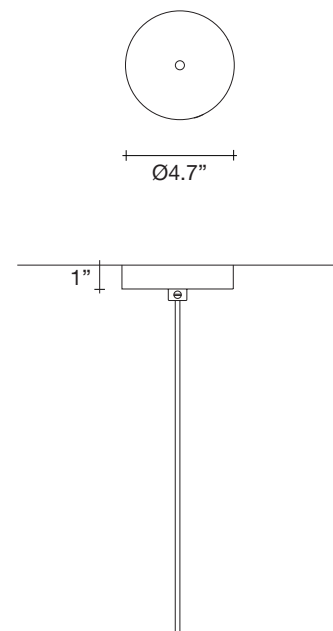


Integrated Led |
120V ~ 50/60Hz

 LED integrated
2,1W 240lm 3000K
or optional 2700K

 Not Dimmable

Canopy |



Core is reminiscent of the natural energy at the heart of our world. Like bright lava seeping through the earth's crust, vibrant spheres of faceted crystal break through the iron surface of this pendant. Forcing light to pass through this metal structure results in a powerful, vibrant exchange of forces light and shadow erupt across the room, as the LED light pours through, as the light itself emits an organic radiance. Design Christian Lava.



3.3



2.2



14.2" x 12.2" x 11.8"

Core, Eruption of Light.

design Christian Lava
terzani.com

TERZANI
LA LUCE PENSATA



Type |
Suspension

Materials |
Brass

Finishes | Code



Nickel
0P21S E7 A9

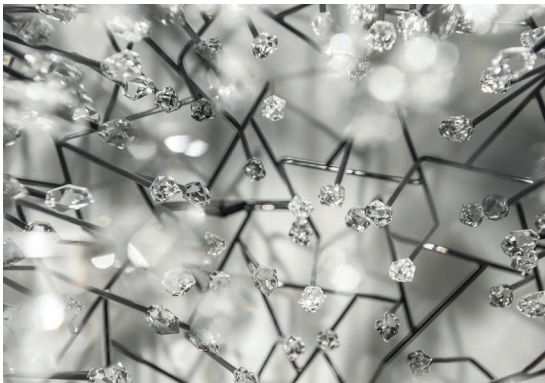
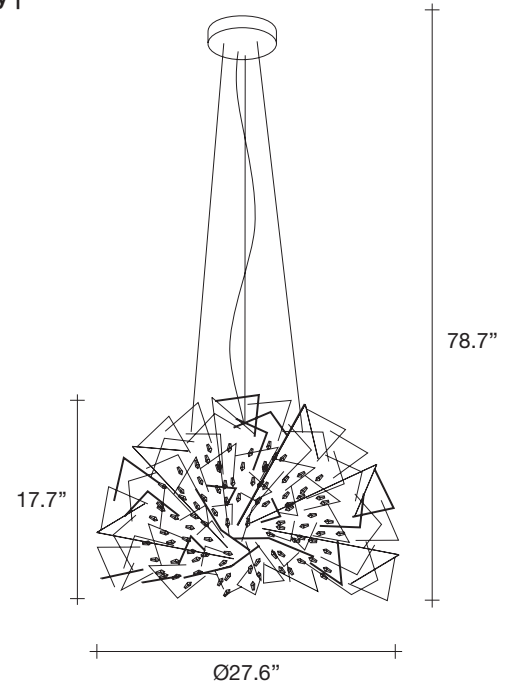


Black Nickel
0P21S E9 A9



Gold
0P21S L6 A9

Body |



Integrated Led |

120V ~ 50/60Hz

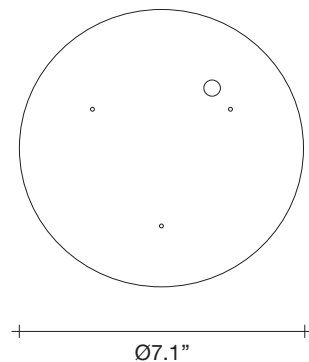


COB LED integrated
18W 1640lm 3000K
or optional 2700K



Dimmable with 1-10V and PUSH
Dali system on request

Canopy |



Core is reminiscent of the natural energy at the heart of our world. Like bright lava seeping through the earth's crust, vibrant spheres of faceted crystal break through the iron surface of this pendant. Forcing light to pass through this metal structure results in a powerful, vibrant exchange of forces light and shadow erupt across the room, as the LED light pours through, as the light itself emits an organic radiance. Design Christian Lava.

Core, Eruption of Light.

design Christian Lava
terzani.com

TERZANI
LA LUCE PENSATA



Type |
Suspension

Materials |
Brass

Finishes | Code



Nickel
0P20S E7 A9

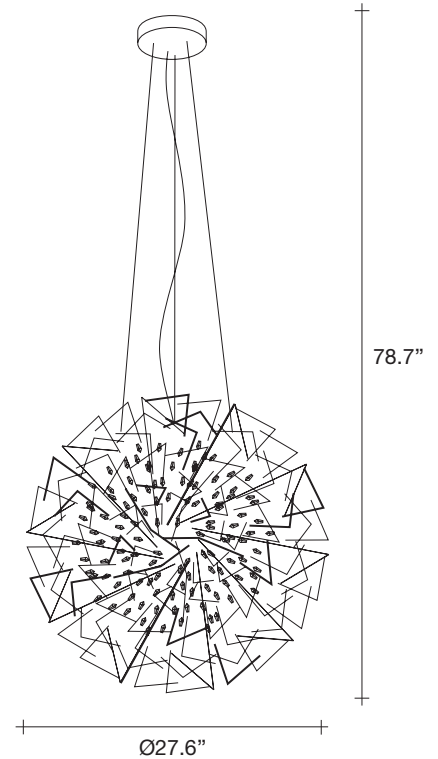


Black Nickel
0P20S E9 A9



Gold
0P20S L6 A9

Body |



Canopy |

Integrated Led |

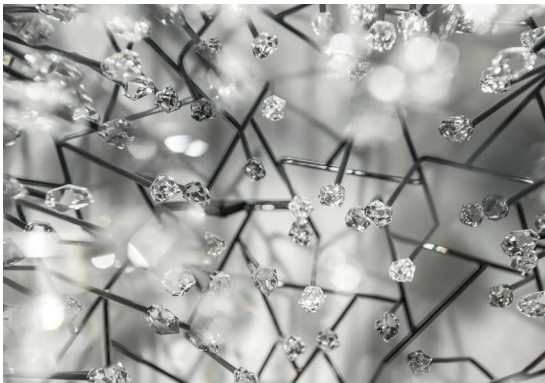
120V ~ 50/60Hz



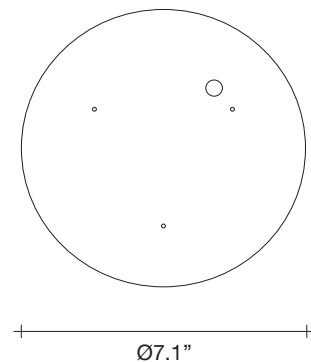
COB LED integrated
18W 1640lm 3000K
or optional 2700K



Dimmable with 1-10V and PUSH
Dali system on request



Core is reminiscent of the natural energy at the heart of our world. Like bright lava seeping through the earth's crust, vibrant spheres of faceted crystal break through the iron surface of this pendant. Forcing light to pass through this metal structure results in a powerful, vibrant exchange of forces light and shadow erupt across the room, as the LED light pours through, as the light itself emits an organic radiance. Design Christian Lava.



57.3



36.4



32.7" x 30.7" x 37.4"