

# Core, Eruption of Light.

design Christian Lava  
terzani.com

**TERZANI**  
LA LUCE PENSATA



**Type |**  
Suspension

**Materials |**  
Brass

**Finishes | Code**



Nickel  
0P22S E7 A9

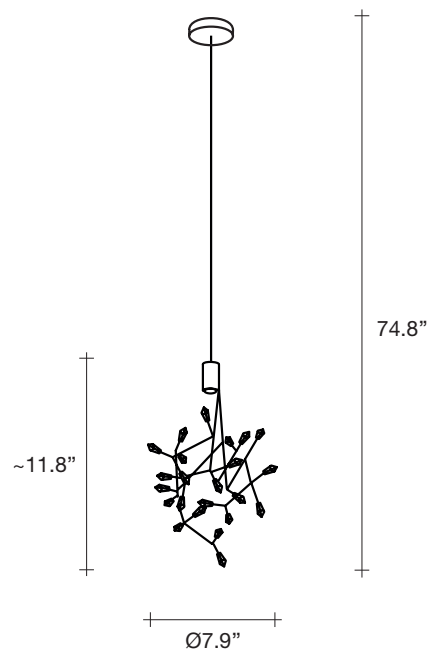


Black Nickel  
0P22S E9 A9



Gold  
0P22S L6 A9

**Body |**



**Integrated Led |**

**120V ~ 50/60Hz**

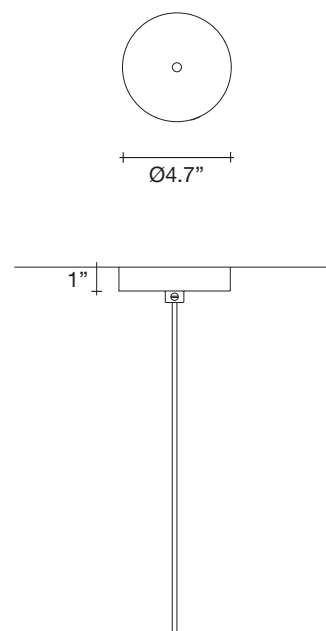


LED integrated  
3000K 2,1W  
240lm



Not Dimmable

**Canopy |**



Core is reminiscent of the natural energy at the heart of our world. Like bright lava seeping through the earth's crust, vibrant spheres of faceted crystal break through the iron surface of this pendant. Forcing light to pass through this metal structure results in a powerful, vibrant exchange of forces light and shadow erupt across the room, as the LED light pours through, as the light itself emits an organic radiance. Design Christian Lava.



3.3



2.2



14.2" x 12.2" x 11.8"

# Core, Eruption of Light.

design Christian Lava  
terzani.com

**TERZANI**  
LA LUCE PENSATA



**Type |**  
Suspension

**Materials |**  
Brass

**Finishes | Code**



Nickel  
0P21S E7 A9

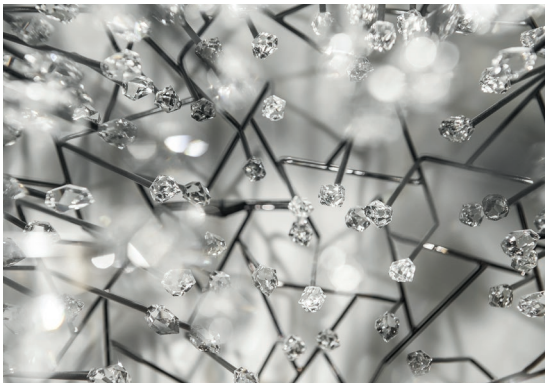
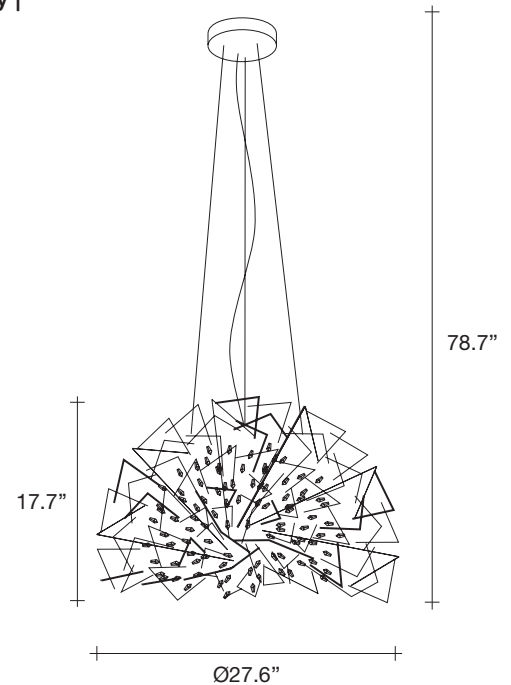


Black Nickel  
0P21S E9 A9



Gold  
0P21S L6 A9

**Body |**



**Integrated Led |**

120V ~ 50/60Hz

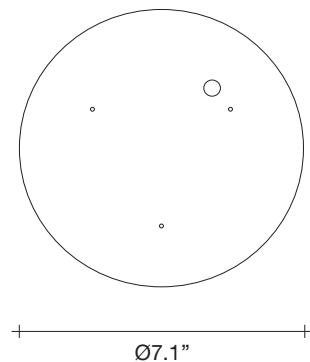


COB LED integrated  
18W  
1640lm



Dimmable with 1-10V and PUSH  
Dali system on request

**Canopy |**



Core is reminiscent of the natural energy at the heart of our world. Like bright lava seeping through the earth's crust, vibrant spheres of faceted crystal break through the iron surface of this pendant. Forcing light to pass through this metal structure results in a powerful, vibrant exchange of forces light and shadow erupt across the room, as the LED light pours through, as the light itself emits an organic radiance. Design Christian Lava.



46.3



26.5



33" x 33" x 28.3"

# Core, Eruption of Light.

design Christian Lava  
terzani.com

**TERZANI**  
LA LUCE PENSATA



**Type |**  
Suspension

**Materials |**  
Brass

**Finishes | Code**



Nickel  
0P20S E7 A9

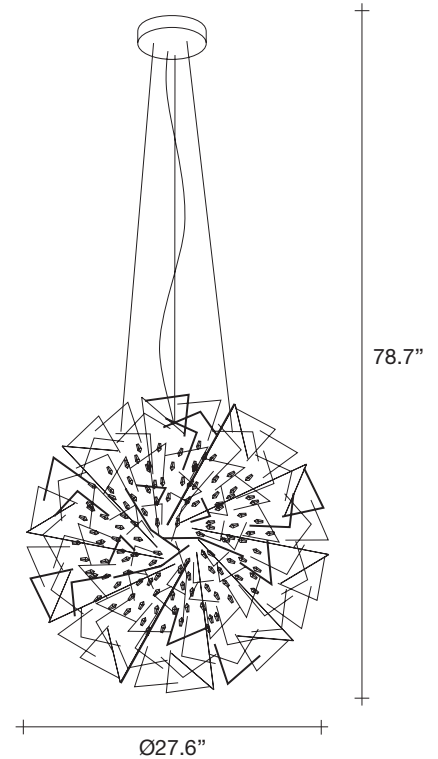


Black Nickel  
0P20S E9 A9



Gold  
0P20S L6 A9

**Body |**



**Canopy |**

**Integrated Led |**

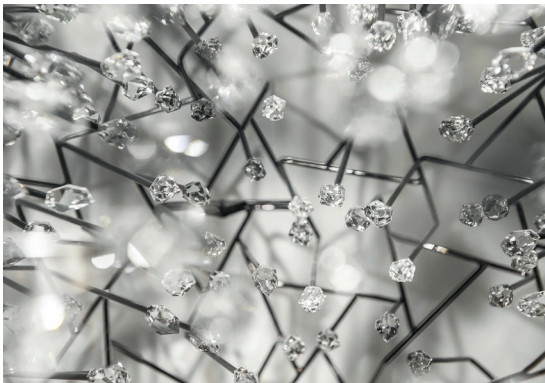
**120V ~ 50/60Hz**



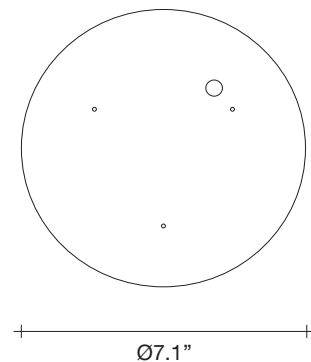
COB LED integrated  
18W  
1640lm



Dimmable with 1-10V and PUSH  
Dali system on request



Core is reminiscent of the natural energy at the heart of our world. Like bright lava seeping through the earth's crust, vibrant spheres of faceted crystal break through the iron surface of this pendant. Forcing light to pass through this metal structure results in a powerful, vibrant exchange of forces light and shadow erupt across the room, as the LED light pours through, as the light itself emits an organic radiance. Design Christian Lava.



57.3



36.4



32.7" x 30.7" x 37.4"