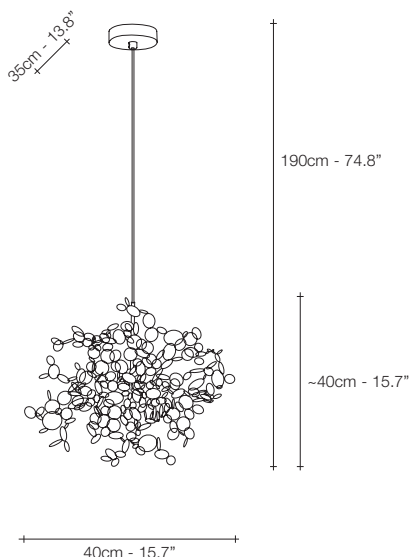
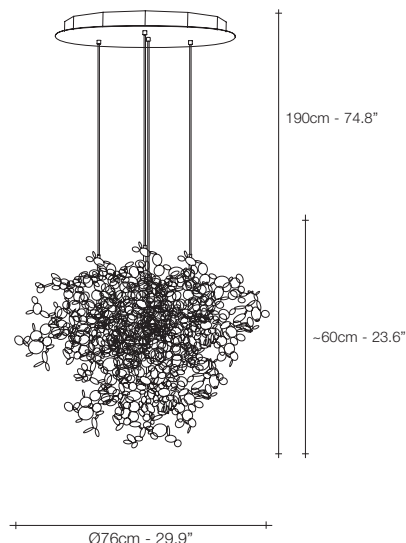


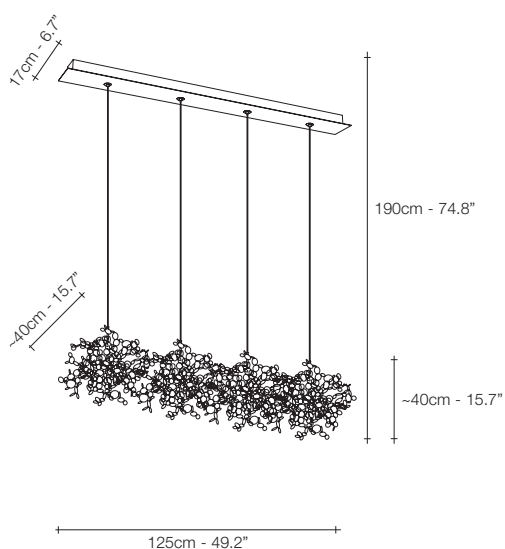
**N90S KK**  
WHITE  
DISC



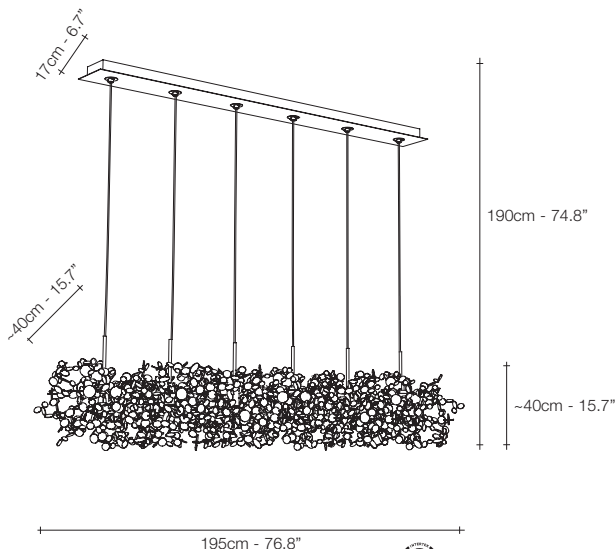
**N90S**



**N91S**



**N92S**



**N89S**



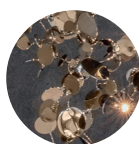
STAINLESS  
STEEL



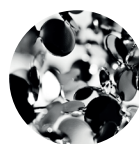
GOLD  
PLATED





ROSE GOLD  
PLATED



CHAMPAGNE



BLACK  
NICKEL  
(on request)

	RECOMMENDED BULB	N90S KK	N90S	N91S	N92S	N89S	N97A	N99L	N98B		INTEGRATED LED	N95S	N93S	N94S
230V	G4 HALOGEN	3x20W	3x20W	12x20W	12x20W	18x20W	3x20W	3x20W	-	230V	 LED	6x2,1W	12x2,1W	18x2,1W
	G4 LED	3x2W	3x2W	12x2W	12x2W	18x2W	3x2W	3x2W	3x2W			1640lm	3285lm	4930lm
	Dimmer	IGBT 0/1-10V 10-100kΩ PUSH/DALI	IGBT TRIAC DALI	IGBT 0/1-10V 10V PWM 10-100kΩ PUSH/DALI	IGBT 0/1-10V 10V PWM 10-100kΩ PUSH/DALI	IGBT 0/1-10V 10V PWM 10-100kΩ PUSH/DALI	IGBT TRIAC DALI	IGBT TRIAC DALI	no		Dimmer	0/1-10V PUSH/DALI	1-10V PUSH/DALI	PUSH/DALI
120V	G4 XENON	3x20W	3x20W	12x20W	12x20W	18x20W	3x20W	3x20W	-	120V	 LED	6x2,1W	12x2,1W	18x2,1W
	G4 LED	3x2W	3x2W	12x2W	12x2W	18x2W	3x2W	3x2W	-			1640lm	3290lm	4930lm
	Dimmer	IGBT TRIAC	IGBT TRIAC	IGBT TRIAC	IGBT TRIAC	IGBT TRIAC	IGBT TRIAC	IGBT TRIAC	-		Dimmer	0/1-10V PUSH	0/1-10V PUSH/DALI	0/1-10V PUSH

Argent N93S, N94S, N95S can be manufactured to work with integrated LED 3000K or 2700K. Different dimming options on request.

