

STAINLESS  
STEEL



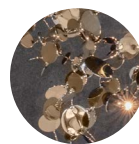
GOLD  
PLATED





ROSE GOLD  
PLATED



BLACK  
NICKEL  
(on request)



CHAMPAGNE  
(on request)

	RECOMMENDED BULB	N90S KK	N90S	N91S	N92S	N89S	N97A	N99L	N98B		INTEGRATED LED	N93S	N94S	N95S	
230V	G4 HALOGEN	3x20W	3x20W	12x20W	12x20W	18x20W	3x20W	3x20W	-	230V		LED	12x2,1W 3285lm	18x2,1W 4930lm	6x2,1W 1640lm
	G4 LED	3x2W	3x2W	12x2W	12x2W	18x2W	3x2W	3x2W	3x2W						
	Dimmer	IGBT 0/1-10V 100K Ω PUSH/DALI	IGBT TRIAC DALI	IGBT 0/1-10V 10V PWM 100K Ω PUSH/DALI	IGBT 0/1-10V 10V PWM 100K Ω PUSH/DALI	IGBT 0/1-10V 10V PWM 100K Ω PUSH/DALI	IGBT TRIAC DALI	IGBT TRIAC DALI	no		Dimmer	1-10V PUSH/DALI	PUSH/DALI	0/1-10V PUSH/DALI	
120V	G4 XENON	3x20W	3x20W	12x20W	12x20W	18x20W	3x20W	3x20W	-	120V		LED	12x2.1W 3290lm	18x2.1W 4930lm	6x2.1W 1640lm
	G4 LED	3x2W	3x2W	12x2W	12x2W	18x2W	3x2W	3x2W	-						
	Dimmer	IGBT TRIAC	IGBT TRIAC	IGBT TRIAC	IGBT TRIAC	IGBT TRIAC	IGBT TRIAC	IGBT TRIAC	-		Dimmer	0/1-10V PUSH/DALI	0/1-10V PUSH	0/1-10V PUSH	

Argent N93S, N94S, N95S can be manufactured to work with integrated LED 3000K or 2700K. Different dimming options on request.

