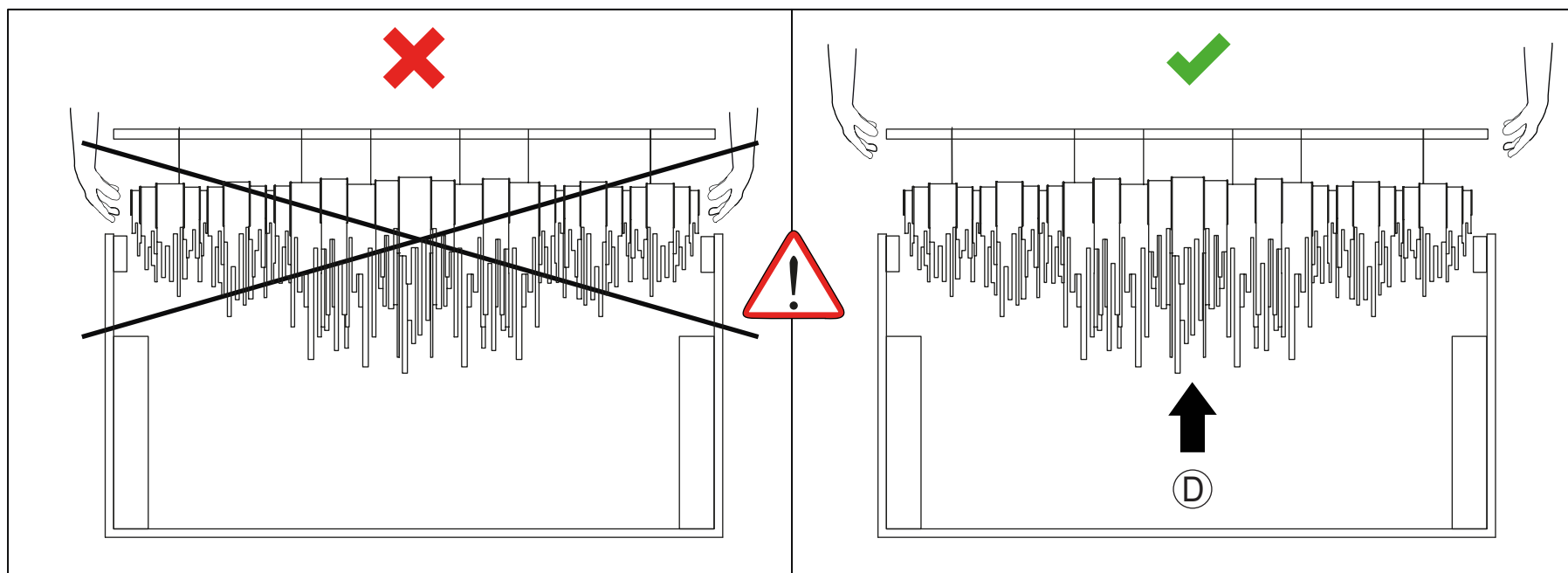
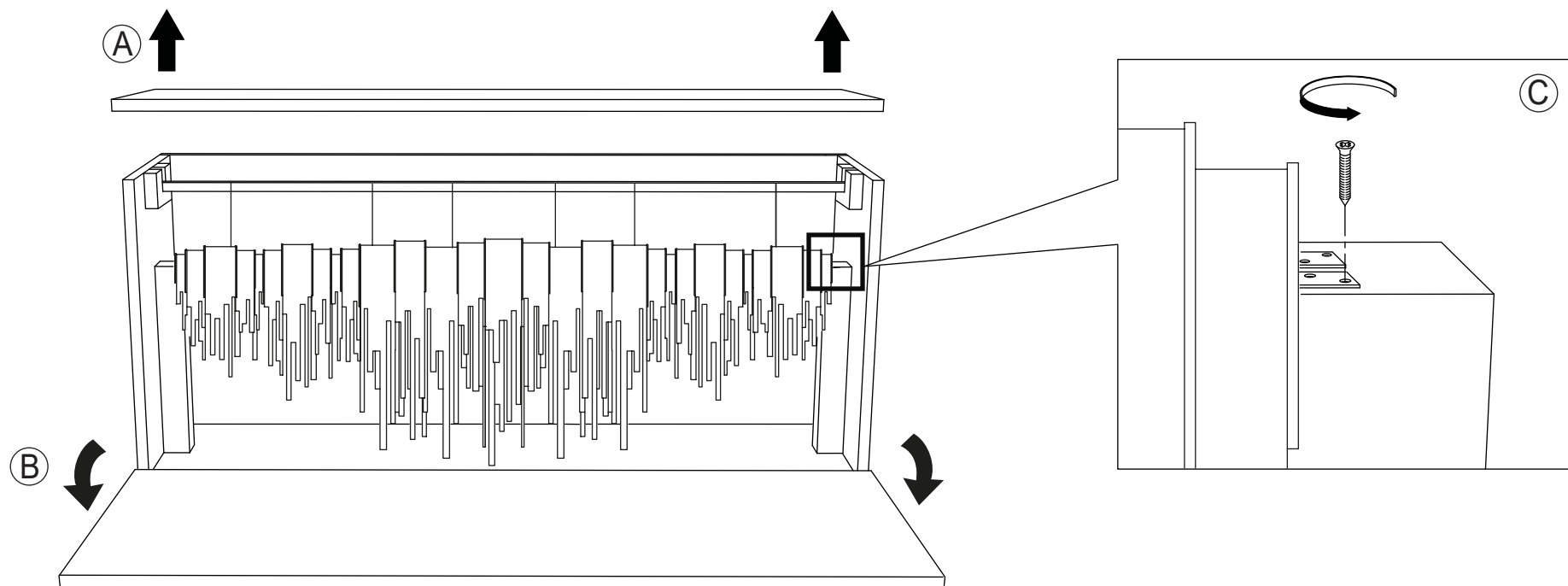


**TERZANI**

LA LUCE PENSATA

# UNBOXING

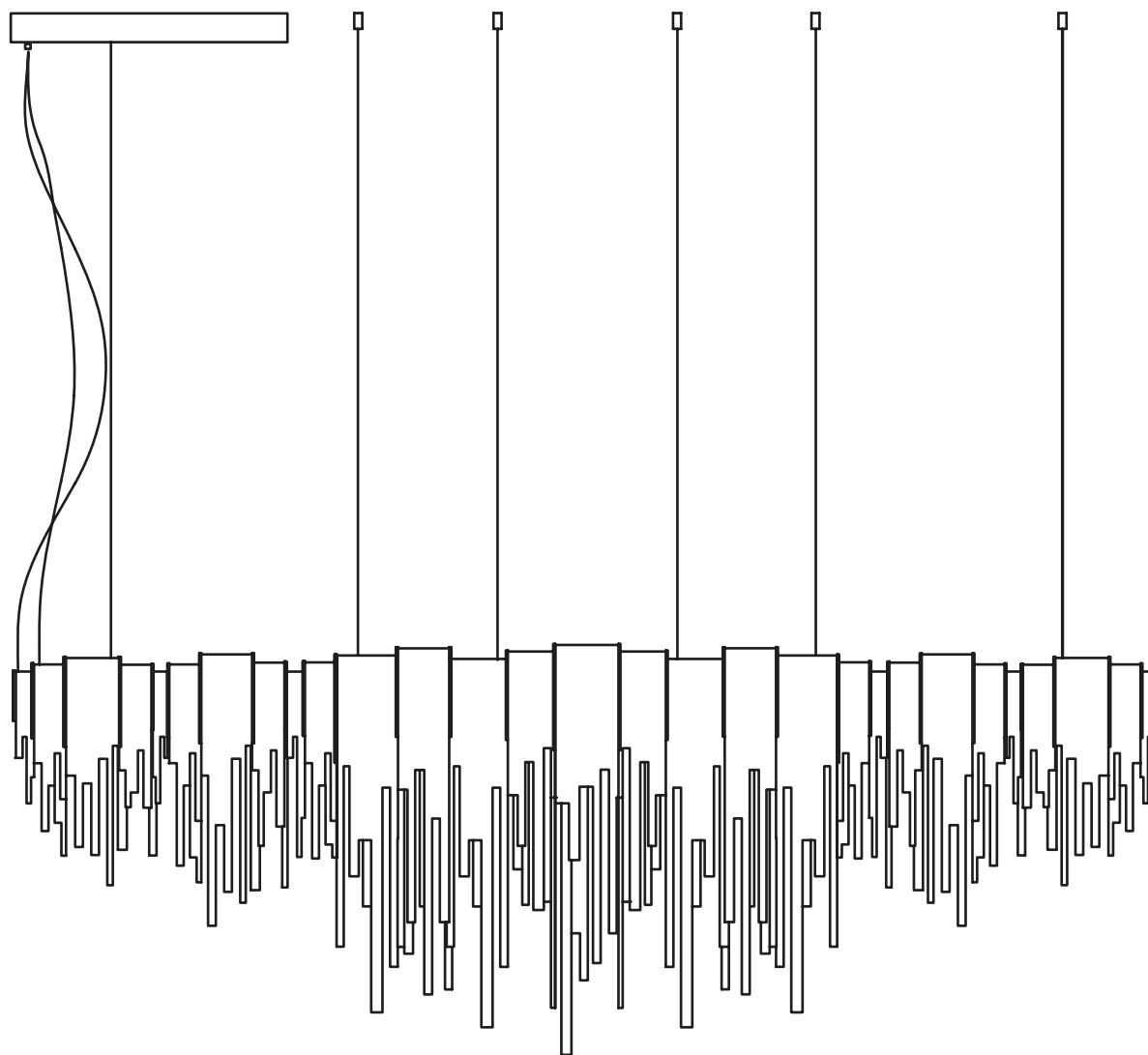


**TERZANI**  
LA LUCE PENSATA

**Volver** large linear chandelier

0L62S-F

0L62S-FW





**VOLVER**

**CODE 0L62S -- -- F**  
3000K

**CODE 0L62S -- -- FW**  
2700K

**220-240V ~ 50/60Hz MAX 90W**

**700mA 20xMAX 4,5W**

**integrated LED**



**45Kgf**  
450N

**x3**



**0...10 V**

**PWM**



30000h

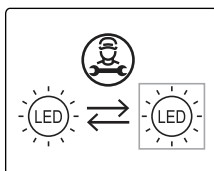
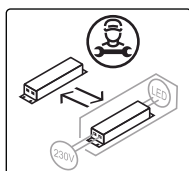


**D**



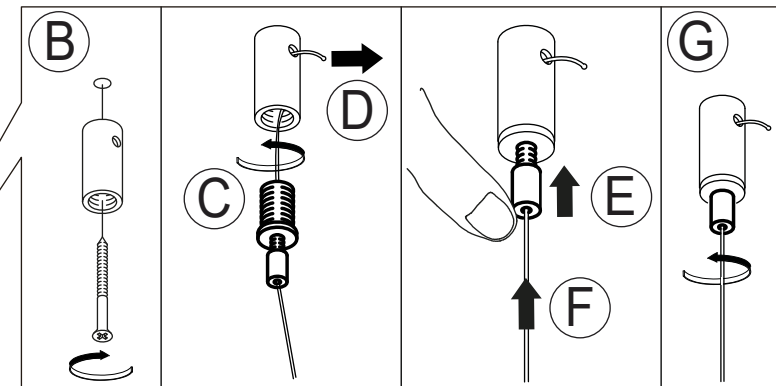
**ERC**

**CB**

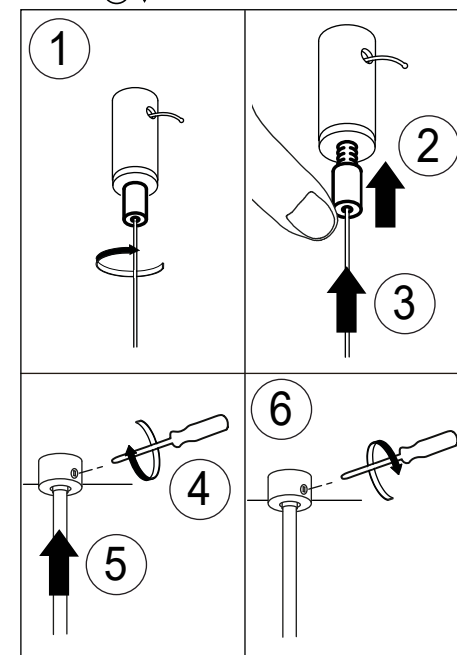
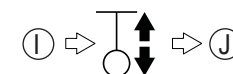
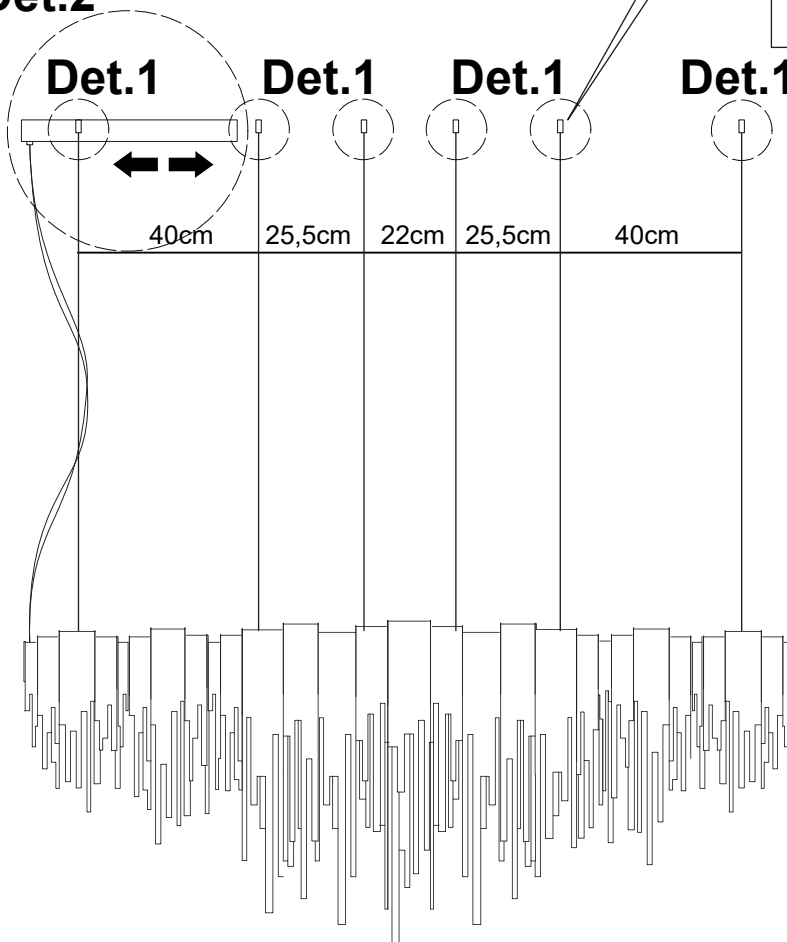


**A**

**Det.1**  
**x6**



**Det.2**



**TERZANI**  
LA LUCE PENSATA

**VOLVER**

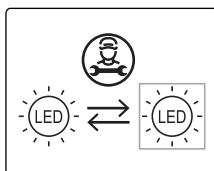
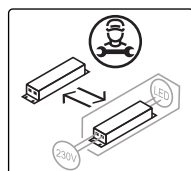
**CODE 0L62S -- F**  
3000K

**CODE 0L62S -- FW**  
2700K

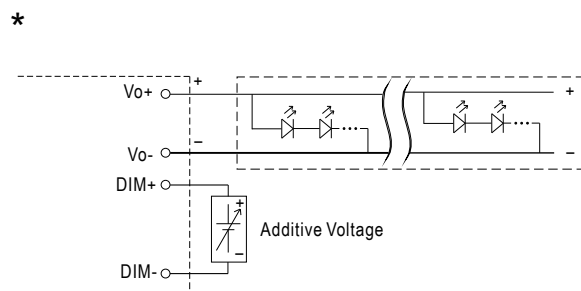
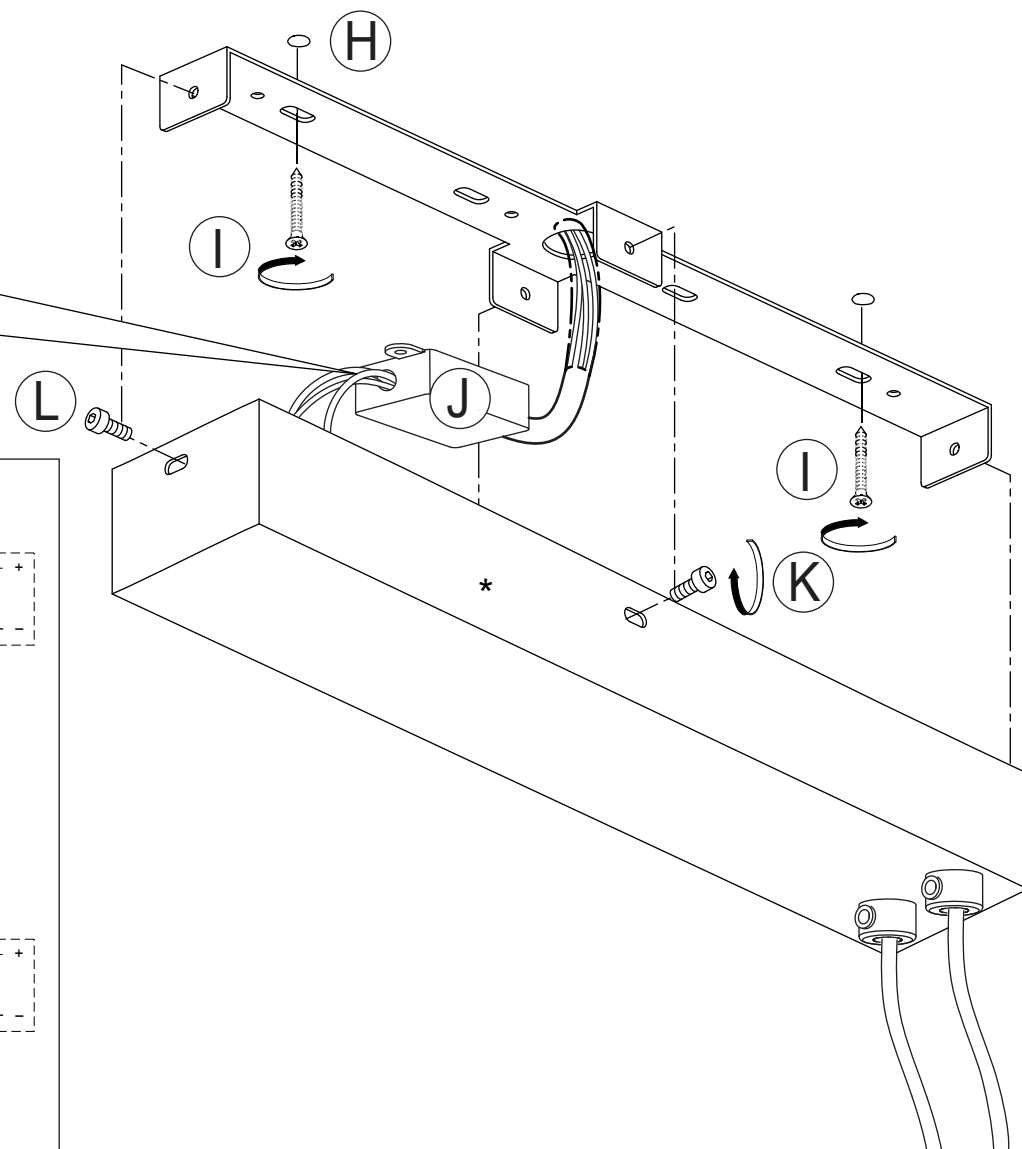
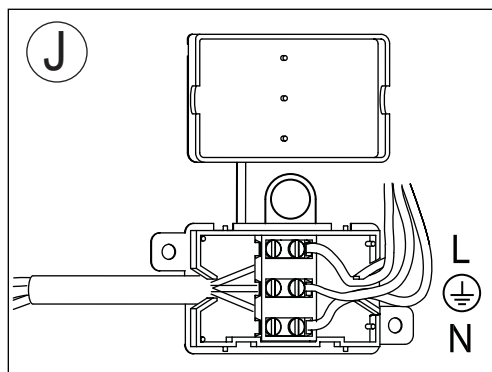
**220-240V ~ 50/60Hz MAX 90W**

**700mA 20xMAX 4,5W**

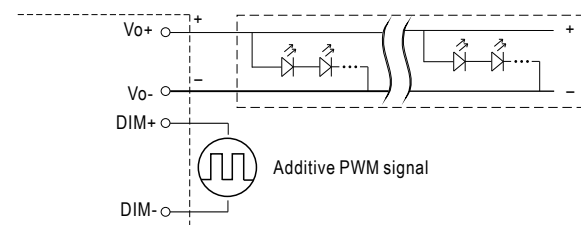
**integrated LED**



## Det.2



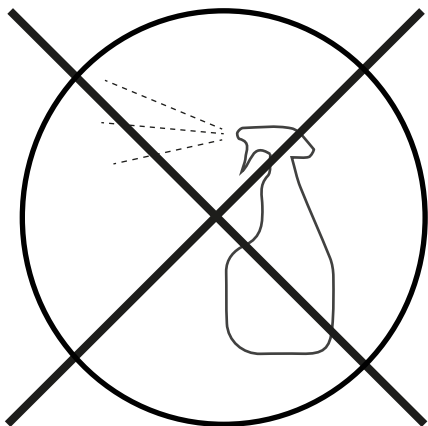
0...10 V diagram



PWM diagram

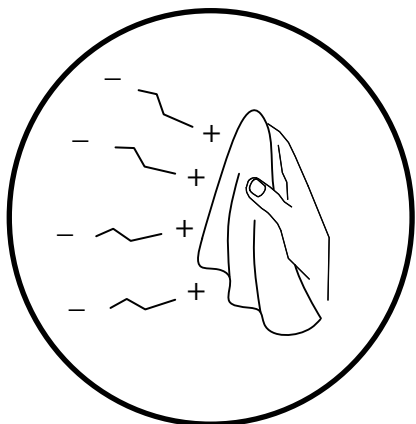
# CLEANING INSTRUCTIONS

**NO**



- IT** Non usare prodotti chimici  
**UK** Do not use chemical products  
**FR** Ne pas utiliser des produits chimiques  
**DE** Verwenden Sie keine Chemikalien  
**РУ** Нельзя использовать химикаты  
**عربي** لا تستعمل كيماوية

**YES**



- IT** Usare panno elettrostatico asciutto  
**UK** Use dry electrostatic cloth  
**FR** Utiliser un chiffon électrostatique sec  
**DE** Bitte verwenden Sie nur ein elektrostatisches trockenes Mikrofaser Tuch  
**РУ** Использовать сухую электростатическую ткань  
**عربي** استعمل قطعة قماش جافة



- IT** ATTENZIONE: Non sono coperti da garanzia eventuali danneggiamenti causati da installazione in ambienti con elevate percentuali di umidità e salinità.  
**UK** CAUTION: The warranty does not cover any damage caused by installation in environments with high percentages of humidity or salinity.  
**FR** ATTENTION: Les dommages pouvant dériver de l'installation dans un milieu à taux d'humidité et de salinité élevé ne sont pas couverts par la garantie.  
**DE** HINWEIS: Eventuelle Schäden, die durch die Aufstellung in Räumen mit hohem Feuchtigkeits- und Salzgehalt entstehen, werden nicht von der Garantie gedeckt.  
**РУ** ВНИМАНИЕ: Гарантия не покрывает повреждения, вызванные ненадлежащей эксплуатацией изделия в условиях сред с высоким процентным содержанием солей и влаги.

تحذير: لا تغطي الكفالة الأعطال الناجمة عن التركيب في بيئة ذات عربي  
نسب مئوية عالية من الرطوبة والملوحة.

- IT** Conservare questa istruzione per la manutenzione  
**UK** Keep these instructions for maintenance  
**FR** Garder ces instructions pour l'entretien  
**DE** Dies Wartungsanleitung ist aufzubewahren  
**РУ** Сохраните эту инструкцию по эксплуатации

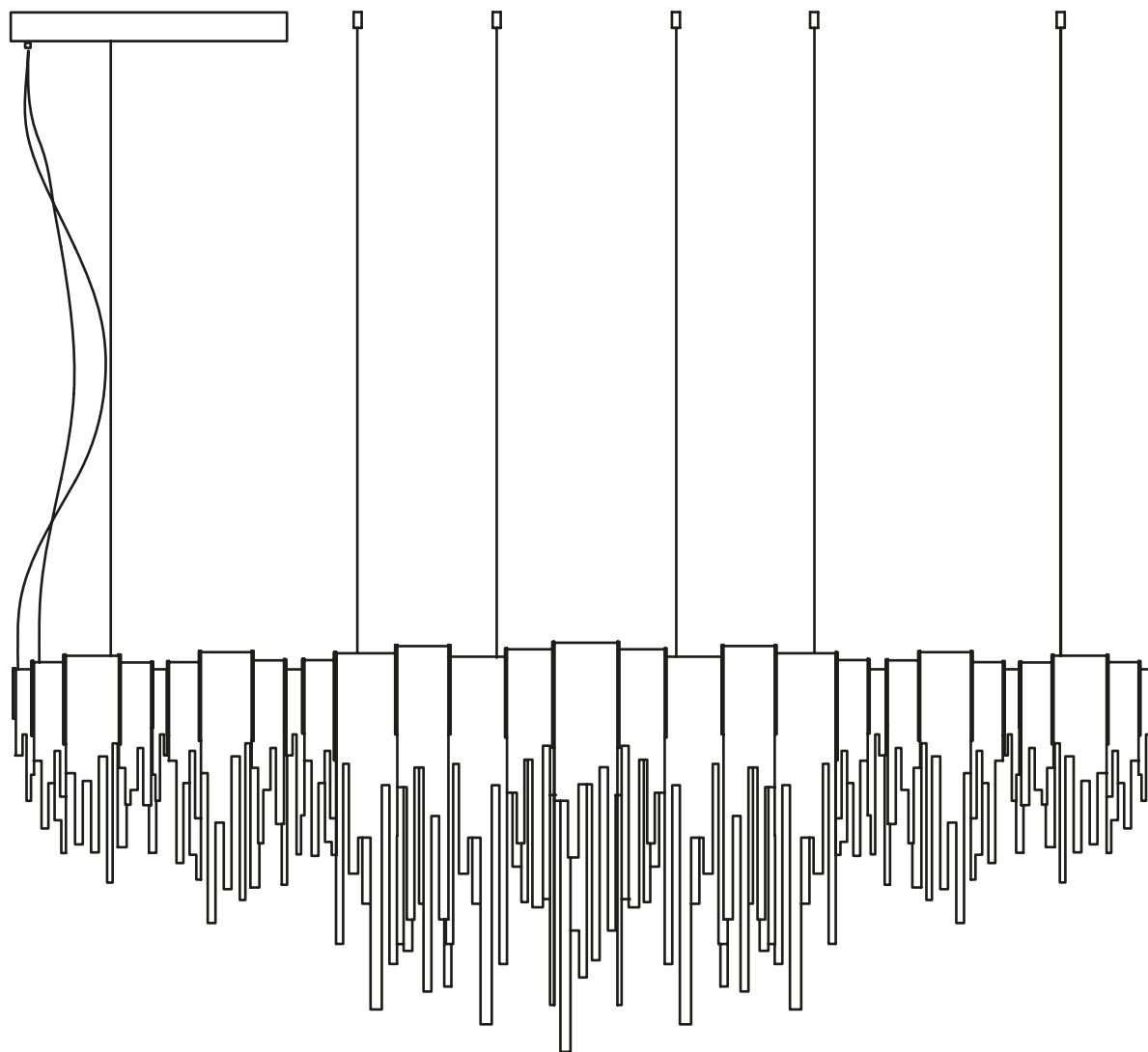
احتفظ بهذه الإرشادات للصيانة عربي

**TERZANI**  
LA LUCE PENSATA

**Volver** large linear chandelier

**0L62S-FD**

**0L62S-FWD**





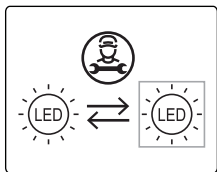
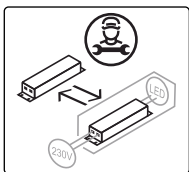
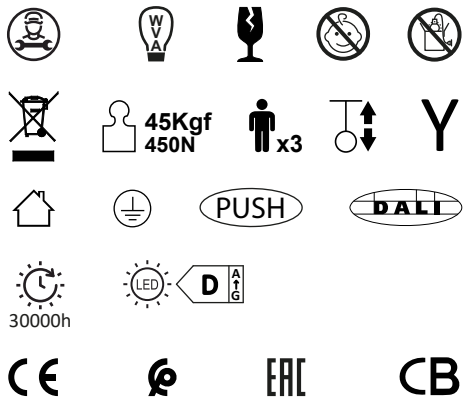
**VOLVER**

**CODE 0L62S -- -- FD**  
3000K

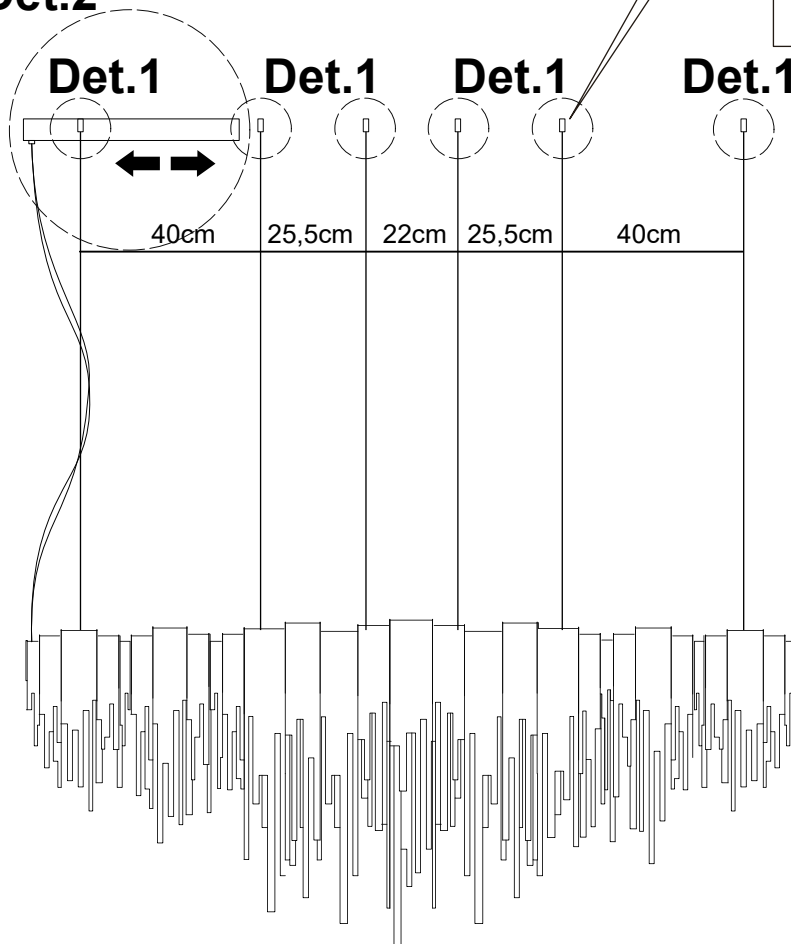
**CODE 0L62S -- -- FWD**  
2700K

**220-240V ~ 50/60Hz MAX 90W**

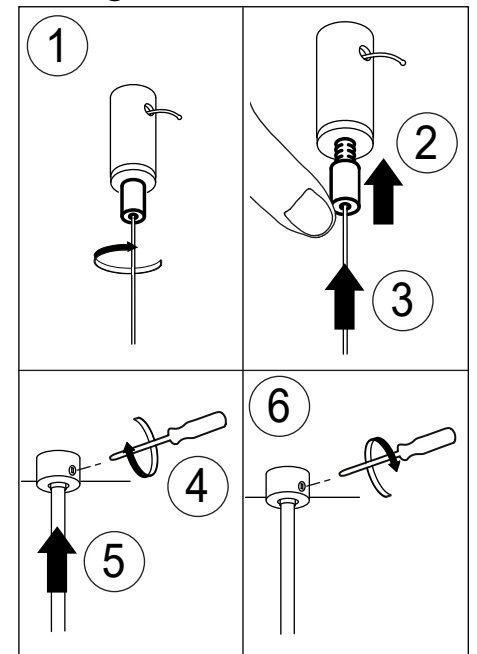
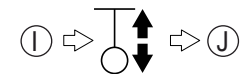
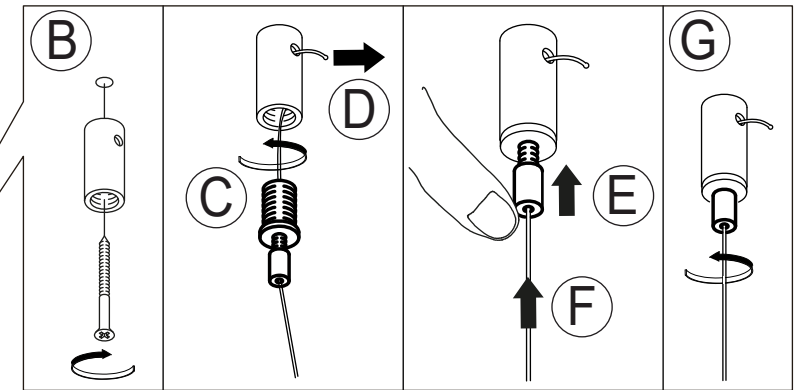
**700mA 20xMAX 4,5W**  
**integrated LED**



**Det.2**



**Det.1**  
**x6**





**TERZANI**  
LA LUCE PENSATA

**VOLVER**

**CODE 0L62S -- -- FD**  
**3000K**

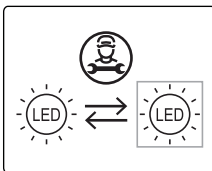
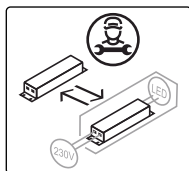
**CODE 0L62S -- -- FWD**  
**2700K**

**220-240V ~ 50/60Hz MAX 90W**

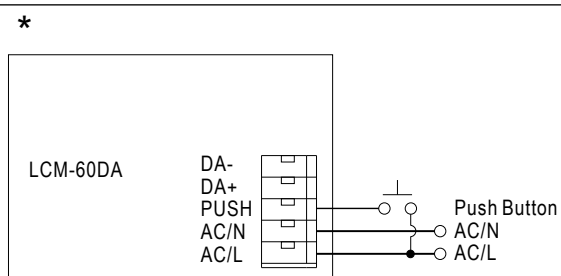
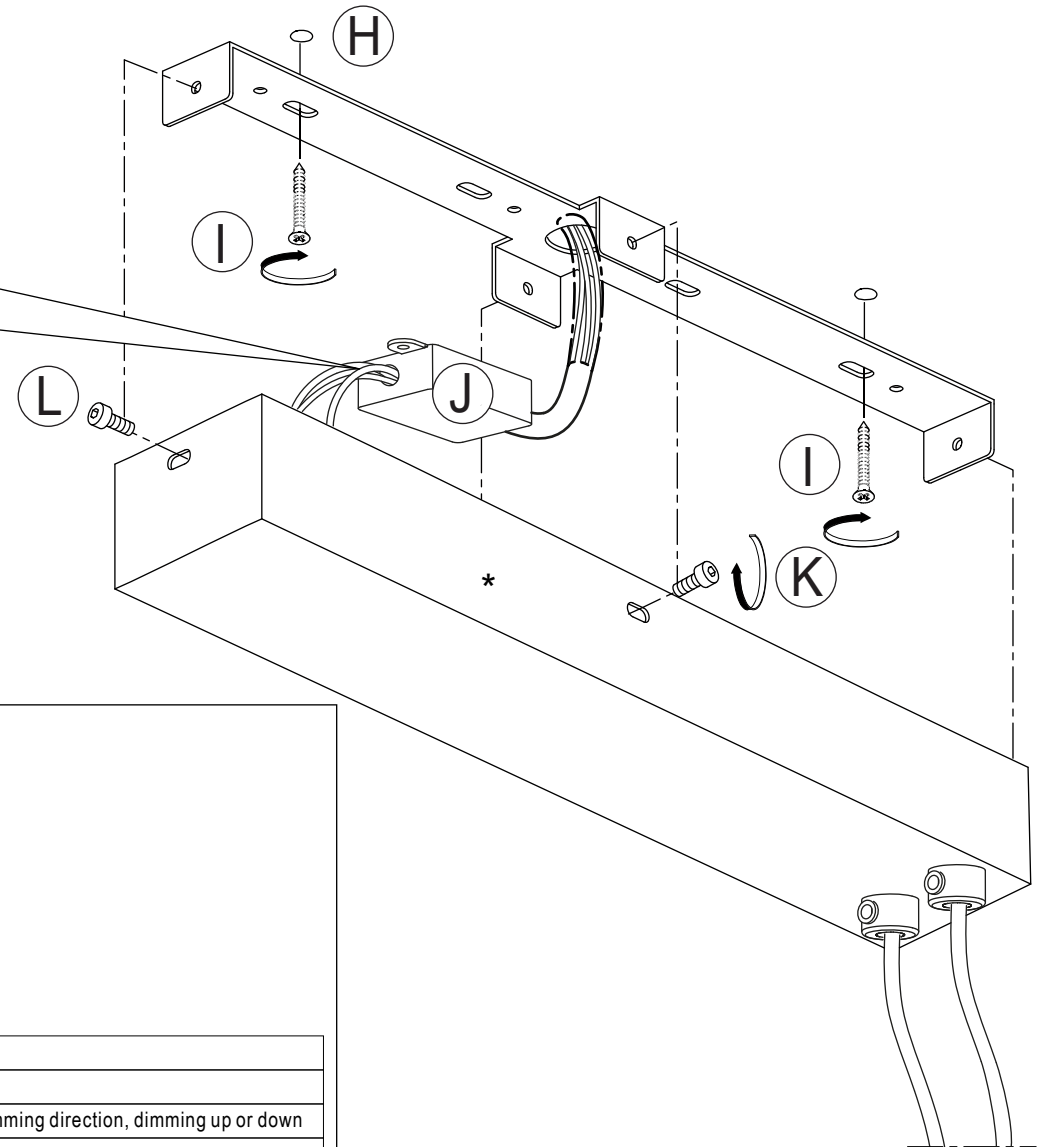
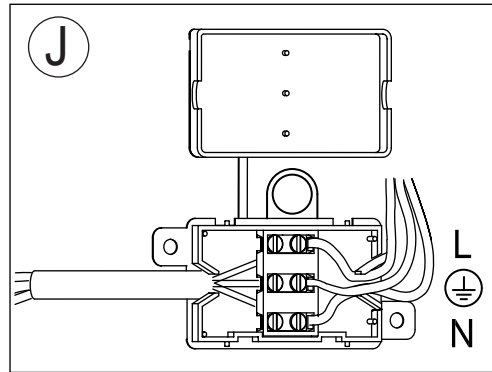
**700mA 20xMAX 4,5W**  
**integrated LED**



30000h



## Det.2



### PUSH dimming(primary side)

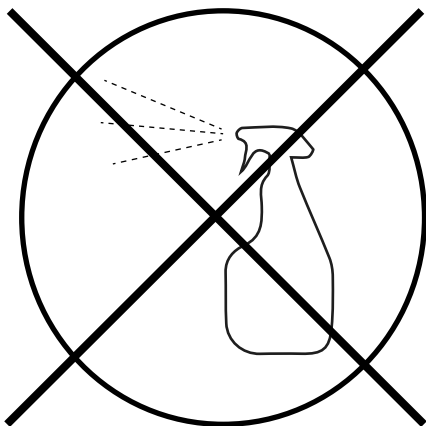
Action	Action duration	Function
Short push	0.1~1 sec.	Turn ON-OFF the driver
Long push	1.5~10 sec.	Every Long Push changes the dimming direction, dimming up or down
Reset	>11 sec.	Set up the dimming level to 100%

### DALI interface(primary side)

Apply DALI signal between DA+ and DA-  
DALI protocol comprises 16 groups and 64 addresses.  
First step is fixed at 6% of output.

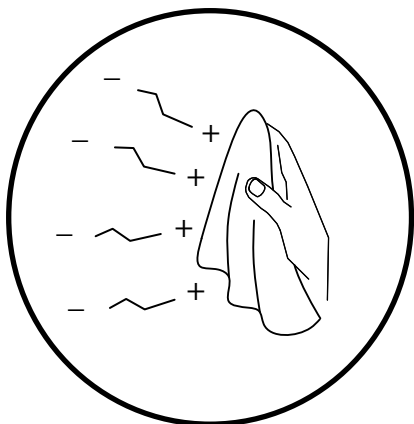
# CLEANING INSTRUCTIONS

**NO**



- IT** Non usare prodotti chimici  
**UK** Do not use chemical products  
**FR** Ne pas utiliser des produits chimiques  
**DE** Verwenden Sie keine Chemikalien  
**РУ** Нельзя использовать химикаты  
**عربي** لا تستعمل كيماوية

**YES**



- IT** Usare panno elettrostatico asciutto  
**UK** Use dry electrostatic cloth  
**FR** Utiliser un chiffon électrostatique sec  
**DE** Bitte verwenden Sie nur ein elektrostatisches trockenes Mikrofaser-tuch  
**РУ** Использовать сухую электростатическую ткань  
**عربي** استعمال قطعة قماش جافة



- IT** ATTENZIONE: Non sono coperti da garanzia eventuali danneggiamenti causati da installazione in ambienti con elevate percentuali di umidità e salinità.  
**UK** CAUTION: The warranty does not cover any damage caused by installation in environments with high percentages of humidity or salinity.  
**FR** ATTENTION: Les dommages pouvant dériver de l'installation dans un milieu à taux d'humidité et de salinité élevé ne sont pas couverts par la garantie.  
**DE** HINWEIS: Eventuelle Schäden, die durch die Aufstellung in Räumen mit hohem Feuchtigkeits- und Salzgehalt entstehen, werden nicht von der Garantie gedeckt.  
**РУ** ВНИМАНИЕ: Гарантия не покрывает повреждения, вызванные ненадлежащей эксплуатацией изделия в условиях сред с высоким процентным содержанием солей и влаги.

تحذير: لا تغطي الكفالة الأعطال الناجمة عن التركيب في بيئة ذات عربي  
نسب مئوية عالية من الرطوبة والملوحة.

- IT** Conservare questa istruzione per la manutenzione  
**UK** Keep these instructions for maintenance  
**FR** Garder ces instructions pour l'entretien  
**DE** Dies Wartungsanleitung ist aufzubewahren  
**РУ** Сохраните эту инструкцию по эксплуатации

احتفظ بهذه الإرشادات للصيانة عربي