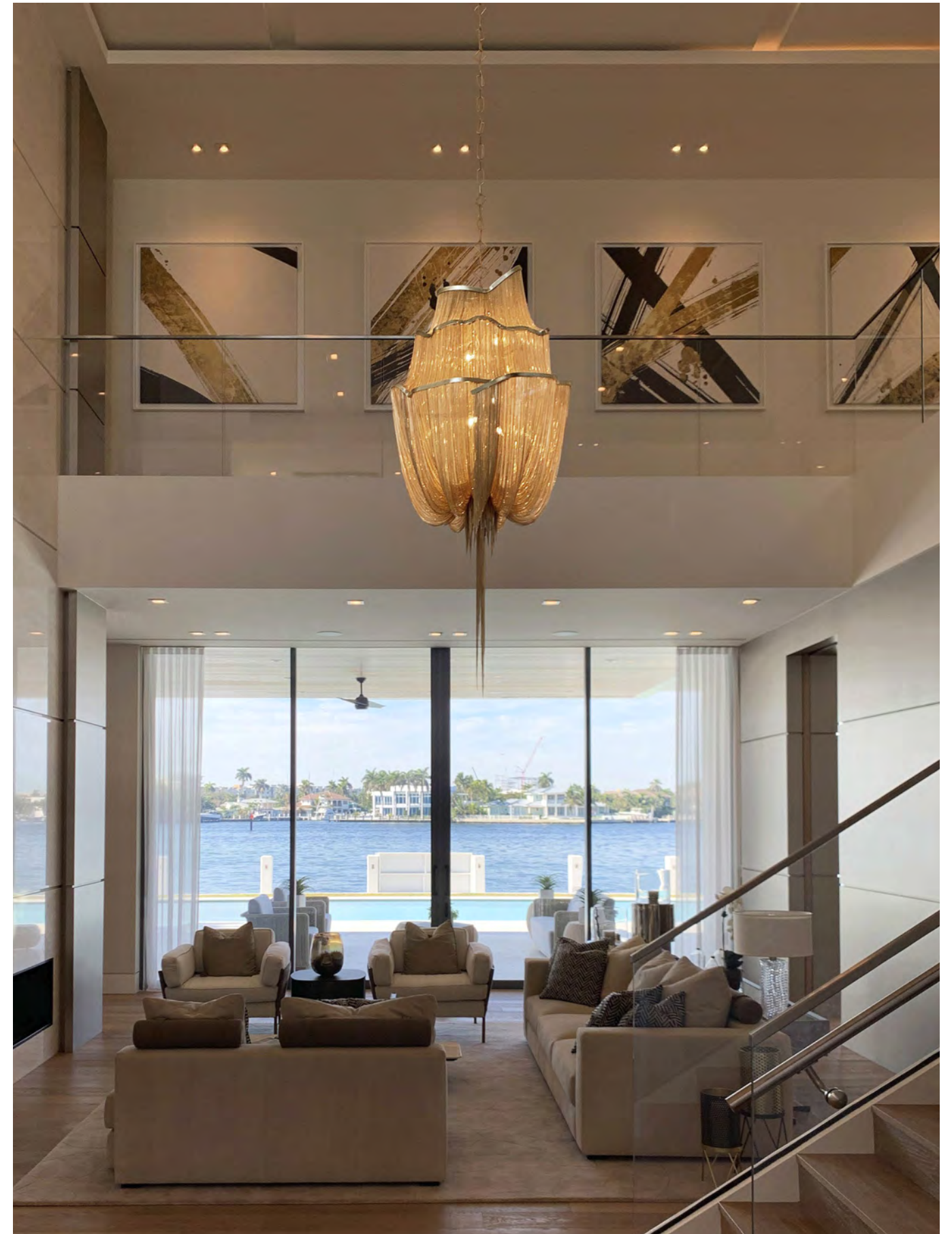


Atlantis, a precious *wave*.

Seemingly alive, Atlantis' shimmering light creates a vibrant source of energy. Its mesmerizing, organic effect is created by hundreds of illuminated lengths of draped, nickel chain. Like water in the ocean, Atlantis' chains appear liquid, cascading over its gloss nickel bands and falling down towards the abyss before turning back into itself. Atlantis is composed of almost three miles of chain, meticulously hand-crafted by master Italian artisans. Atlantis is available in nickel, black nickel, bronze, gold and champagne finish. Design Barlas Baylar.













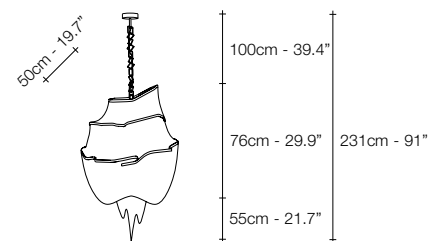









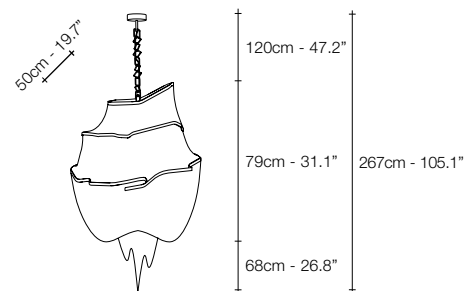




50cm - 19.7"


A13S

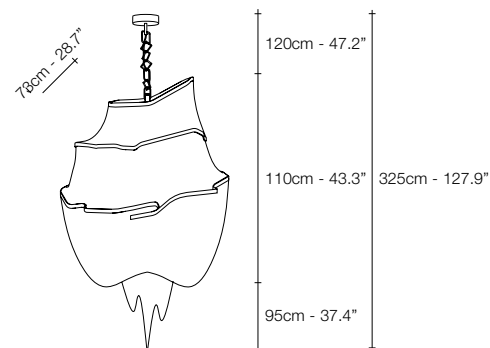
 ETL LISTED US



65cm - 25.6"


A14S

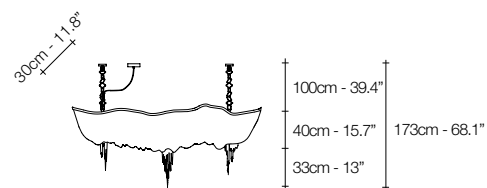




0cm - 35.4"


A15S

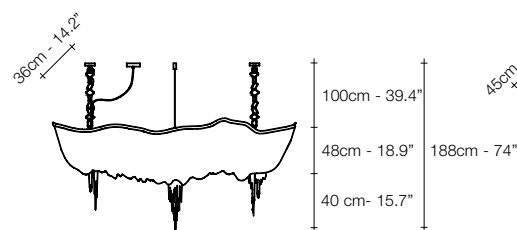
 ETL



150cm - 59.1"


A18S

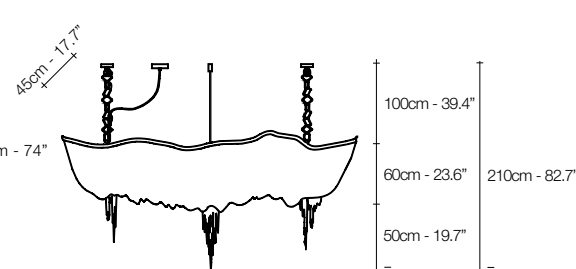




200cm - 78.7"


A17S

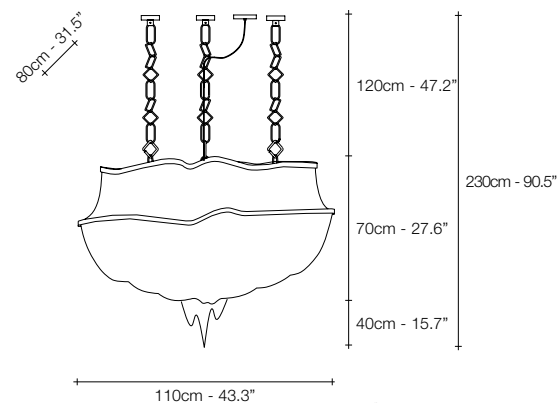




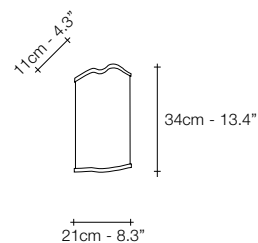
250cm - 98.4"

A16S

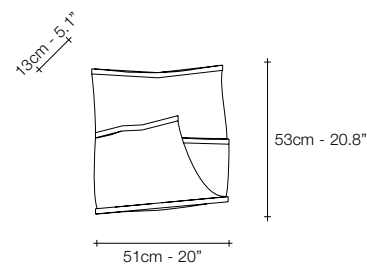





J01S



J04A 



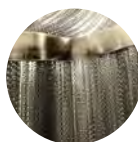
J03A 



NICKEL



BLACK
NICKI



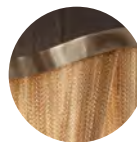
BRONZE



GOLD
PLATED



CHAMPAGNE

BRUSHED
CHAMPAGNE

LIGHT SOURCE		A13S	A14S	A15S	A18S	A17S	A16S	J01S	J04A	J03A
230V	 E14 LED	6x6W	8x6W	8x6W	8x6W	10x6W	10x6W	8x6W	2x6W	4x6W
	Dimmable	✓	✓	✓	✓	✓	✓	✓	✓	✓
120V	 E12 LED	6x5.5W	8x5.5W	8x5.5W	8x5.5W	10x5.5W	10x5.5W	10x5.5W	2x5.5W	4x5.5W
	Dimmable	✓	✓	✓	✓	✓	✓	✓	✓	✓

